

## SAFETY INFORMATION LEAFLET

# ROTOR BLADE INSPECTION MAGNI M16C & M24C GYROPLANES

**APPLICABILITY:** All Owners and Operators of Magni Gyroplanes

### DESCRIPTION:

This Safety Information Leaflet is issued to all operators of Magni Gyro gyroplanes to make them aware of the status of cracks that have become evident on some rotor blades.

Examples of the cracks are as shown in Figure 1 and Figure 2 below:

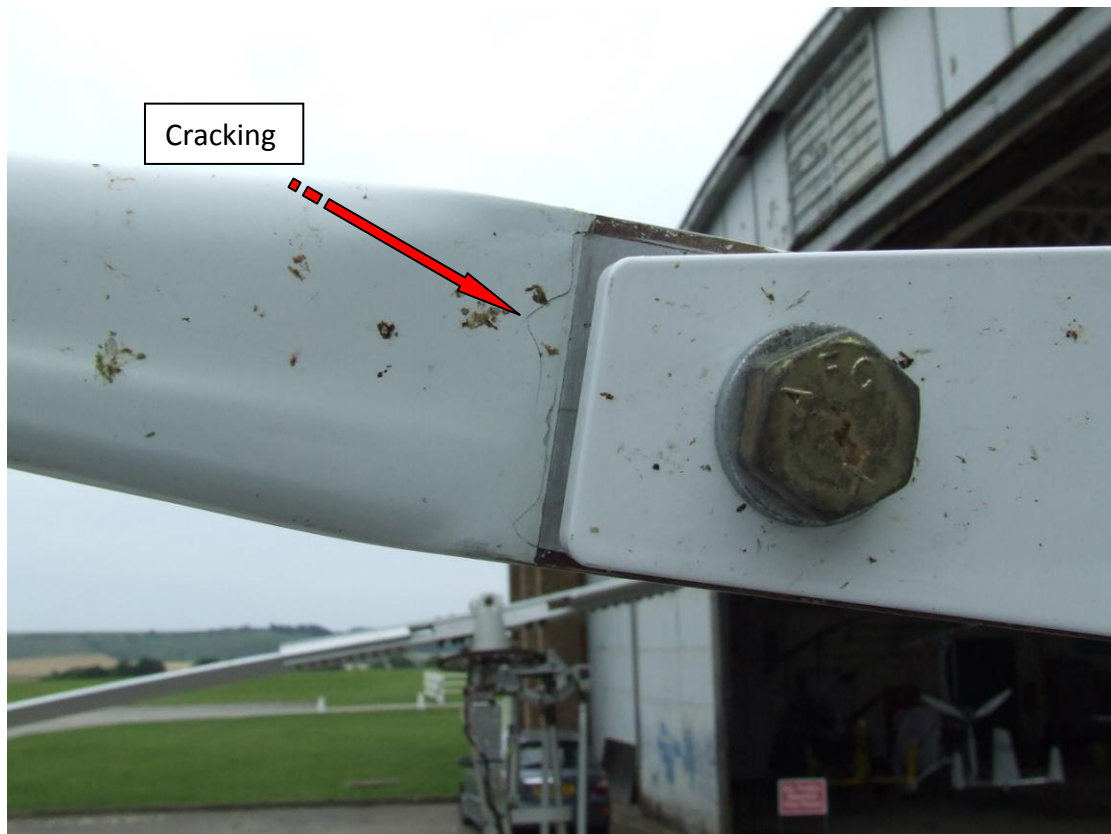
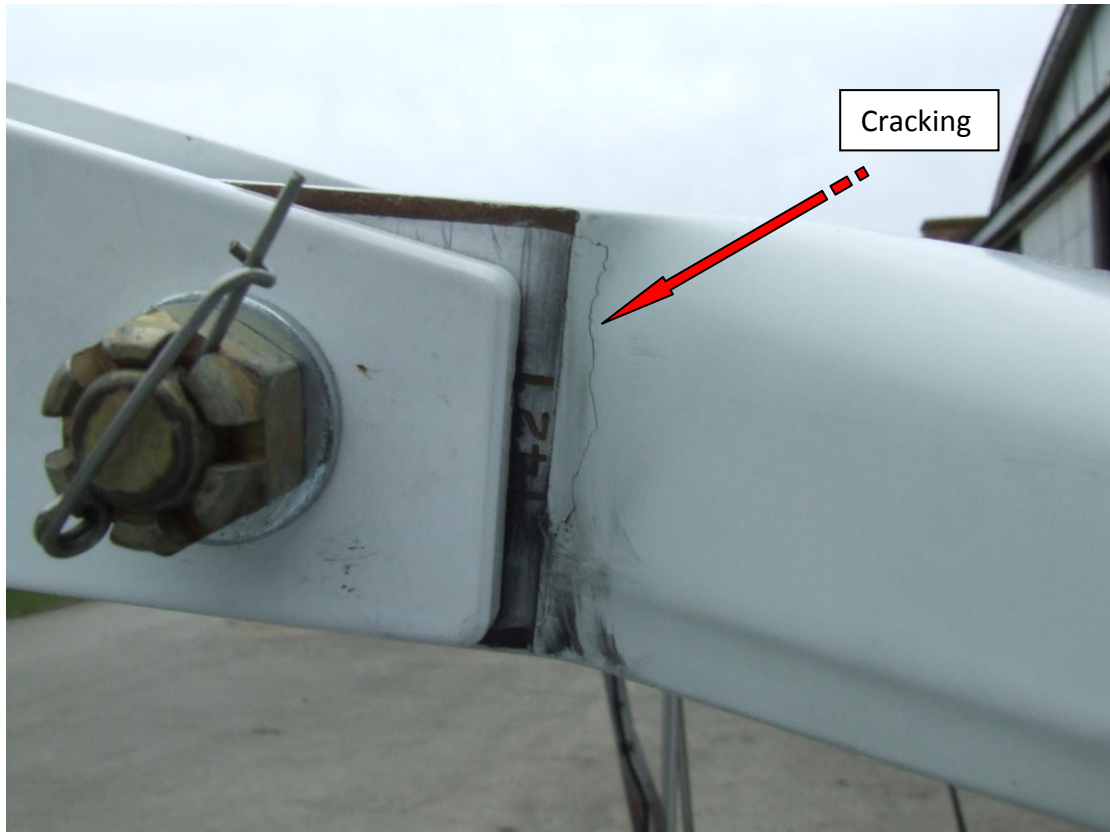


Figure 1 - Cracking Example

**COMPILED BY:** R. LITTLEWOOD  
**DATE:** 18 JULY 2011  
**REVISION:** A

**DOCUMENT No:** SIL-002-2011  
**PAGE No:** 1 OF 3

## SAFETY INFORMATION LEAFLET



**Figure 2 - Cracking Example**

The cracks shown in these pictures are due to the flexing of the paint/filler used in the manufacture of the rotor blades. They are not evidence of the onset of structural failure of the main blades.

All operators are currently required to carry out checks on their rotor blades prior to every flight as part of their pre-flight routine. All operators are requested to pay particular attention to their blades during these checks.

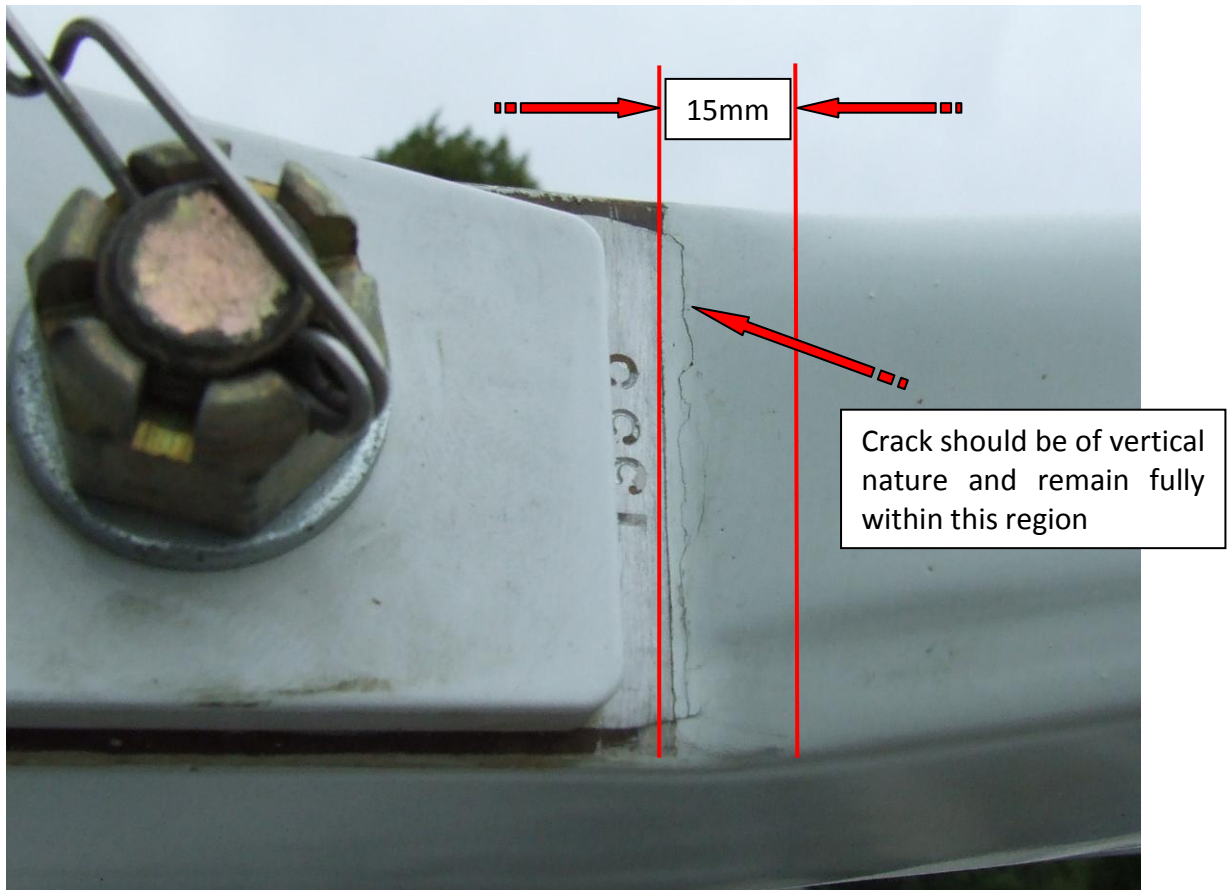
Any cracks should remain within the zone defined in Figure 3 and be of a vertical nature just outboard of the aluminium root fitting. The cracks must only be evident on the fwd or aft faces of the blade – ***they must not extend onto the upper or lower faces of the blade.*** Any cracks that do not conform to the appearance of those shown in the photographs, or lie outside this area should result in the cessation of any further use of the blades.

**Immediate consultation of Magni Gyro UK Ltd should be initiated in such instances.**

**COMPILED BY:** R. LITTLEWOOD  
**DATE:** 18 JULY 2011  
**REVISION:** A

**DOCUMENT No:** SIL-002-2011  
**PAGE No:** 2 OF 3

## SAFETY INFORMATION LEAFLET



**Figure 3 - Limit of Paint Cracking Acceptability**