



MAGNI GYRO s.r.l. Sede: via Volpina – I-21010 BESNATE (VA) – ITALY
Tel. +39 0331 274816 Fax +39 0331 274817 - info@magnigyro.it - www.magnigyro.it



CATALOGO RICAMBI **SPARE PARTS**



M – 24 ORION

Nessuna parte di questo manuale può essere riprodotto o trasmesso in qualsivoglia forma o attraverso qualsivoglia mezzo, elettronico o meccanico, ivi incluse fotocopie, registrazioni o qualsiasi sistema di archiviazione o ricerca delle informazioni senza previa autorizzazione da parte di Magni Gyro.

Copyright 2009 by Magni Gyro. All rights reserved.

No part of this manual may be reproduced or transmitted in any form or by any means, electronic or mechanical, including photocopying, recording or by any information storage or retrieval system, without prior permission from Magni Gyro.

Copyright 2009 by Magni Gyro. All rights reserved.

INDICE

FIG. 01 - STRUTTURA	3
FIG. 02 - COMANDI	5
FIG. 03 - ASTE DI COMANDO	7
FIG. 04 - TESTA ROTORE	9
FIG. 05a - PEDALIERA 1 ^a parte	11
FIG. 05b - PEDALIERA 2 ^a parte	13
FIG. 06 - PIANI DI CODA	15
FIG. 07 - RUOTINO	17
FIG. 08a - CABINA 1 ^a parte	19
FIG. 08b - CABINA 2 ^a parte	21
FIG. 09 - INTERNI CABINA	23
FIG. 10 - TRIM	25
FIG. 11 - ELICA E PREROTAZIONE	27
FIG. 12 - ARRICCHITORE	29
FIG. 13 - IMPIANTO FRENANTE	31
FIG. 14 - MANETTA GAS	33
FIG. 15 - RUOTA	35
FIG. 16 - IMPIANTO CARBURANTE	37
FIG. 17 - IMPIANTO OLIO MOTORE	39
FIG. 18 - IMPIANTO LIQUIDO RAFFREDDAMENTO ..	41
FIG. 19 - FRENO ROTORE	43
FIG. 20 - PANNELLO STRUMENTI	45
FIG. 21 - COMPONENTI ELETTRICI 1 ^a parte	47
FIG. 22 - COMPONENTI ELETTRICI 2 ^a parte	49
FIG. 23 - ACCESSORI MOTORE	51
FIG. 24 - ROTORE	53
FIG. 25 - CAPOTTATURE	55

INDEX

FIG. 01 - STRUCTURE	3
FIG. 02 - CONTROLS	5
FIG. 03 - CONTROLS RODS	7
FIG. 04 - ROTOR HEAD	9
FIG. 05a - RUDDER PEDALS 1 st part	11
FIG. 05b - RUDDER PEDALS 2 nd part	13
FIG. 06 - TAIL PLANES	15
FIG. 07 - NOSE WHEEL ASSEMBLY	17
FIG. 08a - COCKPIT 1 st part	19
FIG. 08b - COCKPIT 2 nd part	21
FIG. 09 - COCKPIT INSIDE	23
FIG. 10 - TRIM	25
FIG. 11 - PROPELLER & PREROTATION	27
FIG. 12 - CHOKE ASSEMBLY	29
FIG. 13 - BRAKING ASSEMBLY	31
FIG. 14 - THROTTLE	33
FIG. 15 - MAIN WHEEL ASSEMBLY	35
FIG. 16 - FUEL SYSTEM	37
FIG. 17 - ENGINE OIL SISTEM	39
FIG. 18 - COOLING SYSTEM	41
FIG. 19 - ROTOR BRAKE	43
FIG. 20 - INSTRUMENT PANEL	45
FIG. 21 - ELECTRIC COMPONENTS 1 st part	47
FIG. 22 - ELECTRIC COMPONENTS 2 nd part	49
FIG. 23 - ENGINE EQUIPMENT	51
FIG. 24 - ROTOR	53
FIG. 25 - FIARINGS	55

FIG. 01 - STRUTTURA
FIG. 01 - STRUCTURE

Pos. Ref.	Codice Part Number	Descrizione	Description	Q.tà Q.ty
1	500-01-24	Struttura M24 Orion	Main structure	1
2	002-01-24	Balestra	Leaf spring	1
3	M8X70	Vite TE	Bolt	4
4	8x24	Rosetta	Washer	8
5	M8	Dado autobloccante alto	Thick self locking nut	4
6	006-01-24	Ruotino	Tail wheel	1
7	007-01-24	Distanziale	Spacer	1
8	10x20	Rosetta	Washer	2
9	6x12	Rosetta	Washer	4
10	M6x60	Vite TE	Bolt	2
11	M6	Dado autobloccante basso	Thin self locking nut	5
12	M6x20	Vite TE	Bolt	2
13	012-01-24	Distanziale cinture sicurezza	Safety belts spacer	4
14	013-01-24	Cintura di sicurezza	Safety belt	2
15	M6x85	Vite TCEI	Screw	2
16*	636-01-24	Struttura con mast divisibile	Split mast structure	1
17*	637-01-24	Parte superiore mast	Mast upper part	1
18*	AN5-24A	Vite TE	Bolt	4
19*	8x16	Rosetta	Washer	12
20*	MS20365-524	Dado autobloccante	Self locking nut	4

*Solo per Mast Divisibile

*Only for Split Mast

FIG. 02 - COMANDI
FIG. 02 - CONTROLS

Pos. Ref.	Codice Part Number	Descrizione	Description	Q.tà Q.ty
1	M8	Dado autobloccante basso	Thin self locking nut	1
2	501-02-24	Distanziale	Spacer	1
3	502-02-24	Supporto anteriore barra torsione	Torsion rod front support	1
4	503-02-24	Cuscinetto	Bearing	1
5	504-02-24	Rosetta triangolare	Triangular washer	1
6	AN3-26A	Vite TE	Bolt	2
7	5x10	Rosetta	Washer	26
8	MS 21042-3	Dado leggero per AN3	Light nut for AN3	12
9	505-02-24	Barra torsione inferiore	Lower torsion rod	1
10	AN4-12A	Vite TE	Bolt	1
11	6x12	Rosetta	Washer	5
12	MS20365-428	Dado per AN4	Nut for AN4	1
13	506-02-24	Supporto posteriore barra torsione	Torsion rod rear support	1
14	507-02-24	Cuscinetto	Bearing	1
15	AN3-13A	Vite TE	Bolt	2
16	508-02-24	Forcella comandi	Control fork	1
17	AN3-22A	Vite TE	Bolt	2
18	AN3-23A	Vite TE	Bolt	2
19	509-02-24	Cuscinetto	Bearing	8
20	510-02-24	Distanziale cuscinetti	Bearing Spacer	2
21	M6x35	Vite TE	Bolt	2
22	M6	Dado autobloccante basso	Thin self locking nut	4
23	511-02-24	Rinvio anteriore comandi	Fore controls link piece	1
24	M5	Dado autobloccante alto	Self locking thick nut	2
25	047-02-24	Spina conica	Tapper pin	2
26	AN3-15A	Vite TE	Bolt	2
27	512-02-24	Barra comando pilota	Pilot stick	1
28	513-02-24	Barra comando co-pilota	Co-pilot stick	1
29	029-02-24	Impugnatura pilota	Pilot grip	1
30	030-02-24	Impugnatura co-pilota	Co-pilot grip	1
31	AN3-16A	Vite TE	Bolt	2
32	623-02-24	Barra torsione superiore	Upper torsion rod	1
33	M6x20	Vite TE	Bolt	2

FIG. 02 - COMANDI
FIG. 02 - CONTROLS

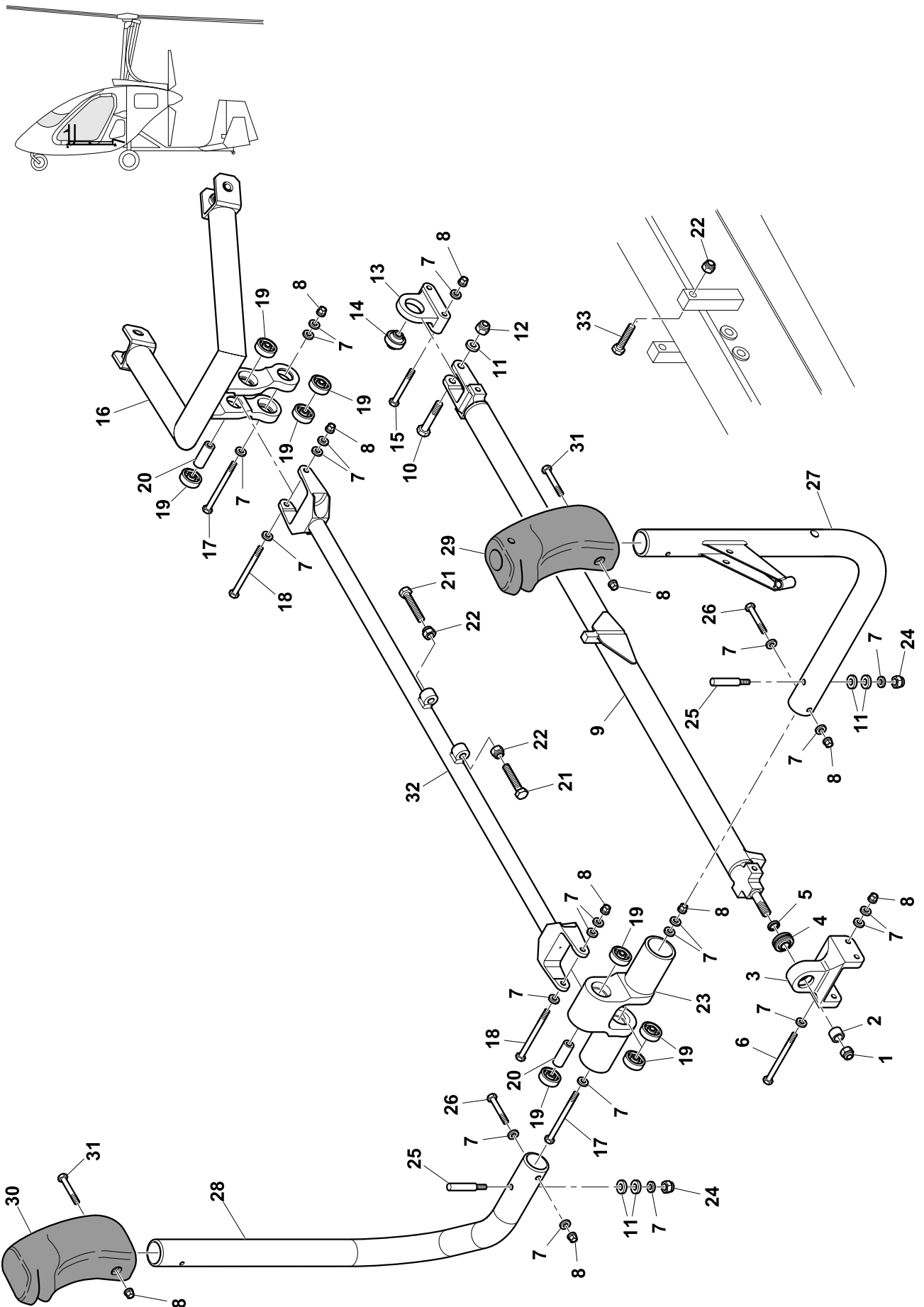


FIG. 03 - ASTE DI COMANDO

FIG. 03 - CONTROLS RODS

Pos. Ref.	Codice Part Number	Descrizione	Description	Q.tà Q.ty
1	624-03-24	Asta di comando inferiore	Lower control rod	2
2	033-03-24	Uniball	Rod end bearing	2
3	034-03-24	Uniball	Rod end bearing	4
4	035-03-24	Uniball	Rod end bearing	2
5	AN 316-6L	Dado	Nut	4
6	AN 316-6	Dado	Nut	4
7	AN 4-16A	Vite TE	Bolt	4
8	6x12	Rosetta	Washer	16
9	MS 20365-428	Dado autobloccante	Self locking nut	8
10	AN4-14A	Vite TE	Bolt	4
11	PAN3009-06-36	Vite TE	Bolt	2
12	M6	Dado autobloccante basso	Thin self locking nut	2
13	036-03-24	Staffa	Link bar	4
14	445-03-24	Distanziale	Spacer	4
15	037-03-24	Distanziale	Spacer	2
16	626-ZZ	Cuscinetto	Bearing	4
17	038-03-24	Asta di comando superiore	Upper control rod	2
18	273-03-24	Boccola	Bushing	12

FIG. 03 - ASTE DI COMANDO
FIG. 03 - CONTROLS RODS

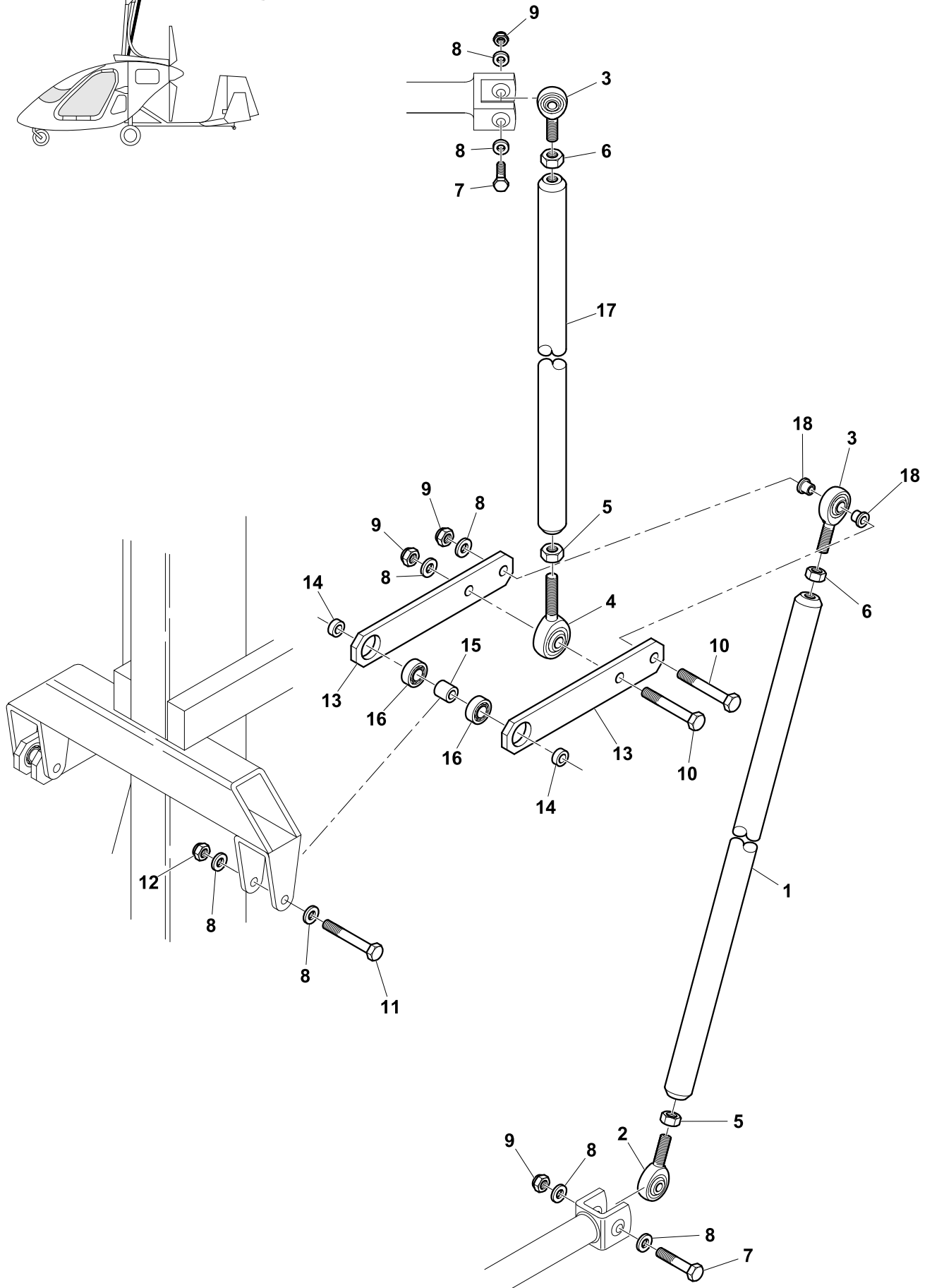
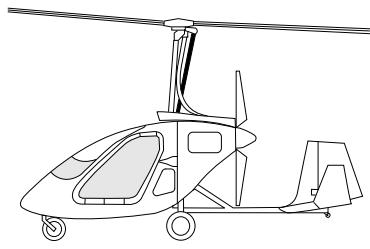


FIG. 04 - TESTA ROTORE

FIG. 04 - ROTOR HEAD

Pos. Ref.	Codice Part Number	Descrizione	Description	Q.tà Q.ty
1	039-04-24	Scodellino inferiore	Lower cup	1
2	M5x12	Vite TE	Bolt	3
3	5	Rosetta frenante	Stopper washer	3
4	5x10	Rosetta	Washer	4
5	040-04-24	Alberino scanalato	Splined shaft	1
6	6203-ZZ	Cuscinetto	Bearing	1
7	041-04-24	Scodellino superiore	Upper cup	1
8	042-04-24	Rosetta	Washer	1
9	A 17 x 1	Anello Seeger	Seeger ring	1
10	043-04-24	Distanziale	Spacer	1
11	044-04-24	Ingranaggio inferiore innesto	Lower Bendix part	1
12	045-04-24	Ingranaggio superiore innesto	Upper Bendix part	1
13	046-04-24	Forcella	Fork	1
14	047-04-24	Spina conica	Tapper pin	1
15	M5	Dado autobloccante basso	Thin self locking nut	1
16	048-04-24	Ribattino	Rivet	3
17	HK 4020	Cuscinetto ad aghi	Needle Bearing	1
18	049-04-24	Fermo cuscinetto	Bearing retainer	1
19	050-04-24	Bussola	Bushing	1
20	M6x20	Vite TCEI	Screw	1
21	AN5-24A	Vite TE	Bolt	4
22	8x16	Rosetta	Washer	12
23	MS20365-524	Dado	Nut	4
24	051-04-24	Forcella inferiore	Lower fork	1
25	052-04-24	Forcella superiore	Upper Fork	1
26	053-04-24	Bronzina	Bushing	2
27	MS 21083 N8	Dado	Nut	2
28	AN 416-1	Spilla di sicurezza	Safety pin	3
29	NAS 628-52	Vite TE	Bolt	1
30	286-04-24	Ingrassatore lungo	Long grease nipple	1
31	055-04-24	Perno	Pivot	1
32	056-04-24	Quadro	Square block	1
33	057-04-24	Bronzina	Bushing	2
34	NAS 628-32	Vite TE	Bolt	1
35	059-04-24	Ingrassatore corto	Short grease nipple	2
36	060-04-24	Distanziale	Spacer	1
37	061-04-24	Corona dentata	Notched gear	1
38	062-04-24	Guarnizione	Seal	1
39	7206 BECBP	Cuscinetto	Bearing	2
40	063-04-24	Distanziale	Spacer	1
41	064-04-24	Dado	Nut	1
42	065-04-24	Coppiglia	Cotter pin	1
43	066-04-24	Testa rotore in alluminio	Aluminium rotor head	1
44	NKXR 15 Z	Cuscinetto	Bearing	2
45	067-04-24	Distanziale	Spacer	1
46	12x15x22,5	Bussola	Bushing	2
47	432-04-24	Dado autobloccante	Self locking nut	1
48	PAN 3009-136	Vite TE	Bolt	1
49	AN5-40A	Vite TE	Bolt	4
50	070-04-24	Rosetta	Washer	4

FIG. 04 - TESTA ROTORE

FIG. 04 - ROTOR HEAD

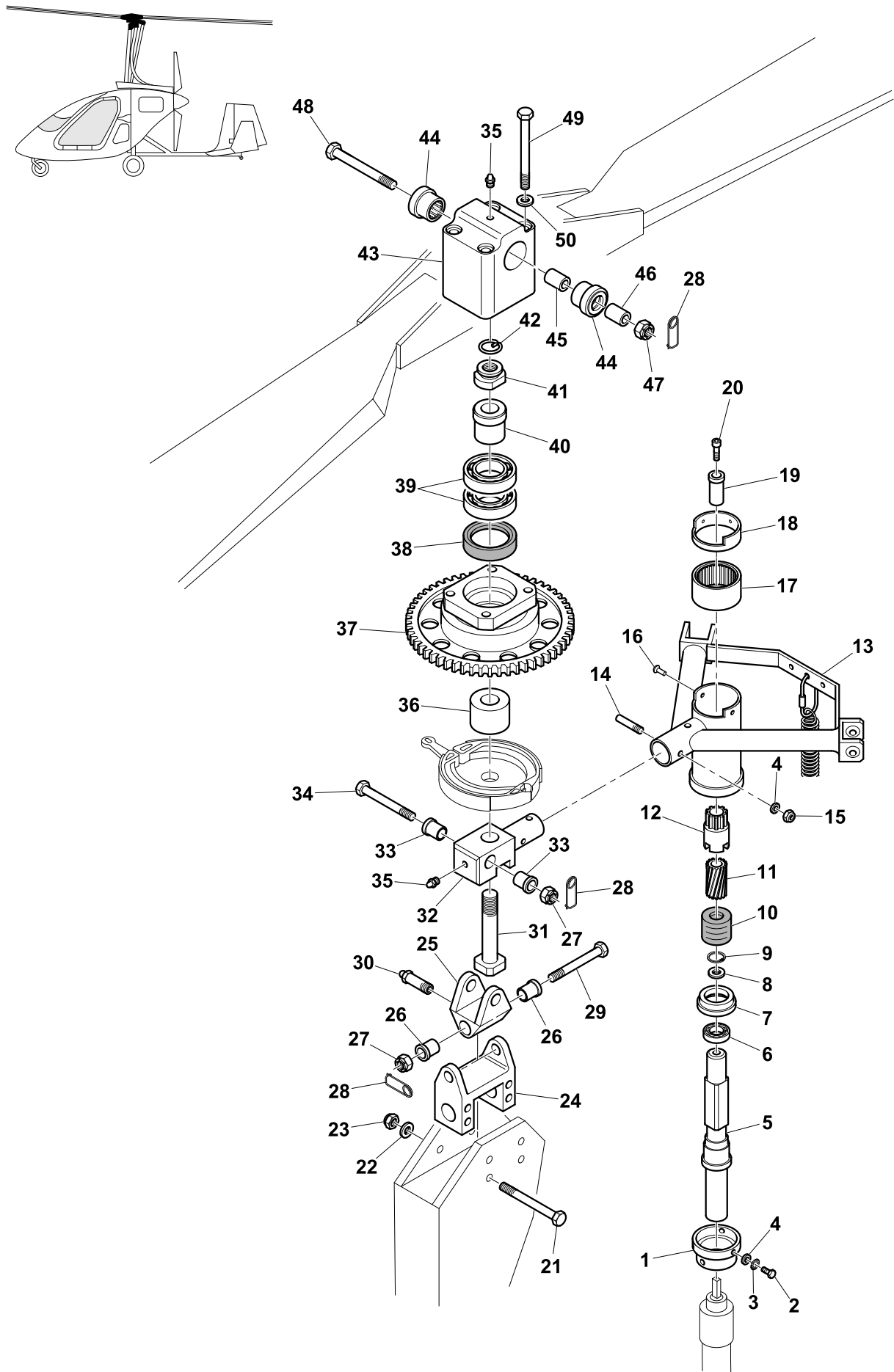


FIG. 05a - PEDALIERA 1ª parte**FIG. 05a - RUDDER PEDALS 1st part**

Pos. Ref.	Codice Part Number	Descrizione	Description	Q.tà Q.ty
1	514-05-24	Blocco pedaliera	Pedal block	2
2	M8x60	Vite TCEI	Screw	2
3	8x16	Rosetta	Washer	4
4	608ZZ	Cuscinetto	Bearing	4
5	515-05-24	Rinvio pedaliera pilota	Pilot pedals link piece	1
6	516-05-24	Distanziale rinvio pedaliera	Pedal link piece spacer	2
7	517-05-24	Rinvio pedaliera co-pilota	Co-pilot pedals link piece	1
8	518-05-24	Bronzine blocco pedaliera	Rudder block bushings	8
9	M8	Dado autobloccante basso	Thin self locking nut	2
10	M6x55	Vite TE	Bolt	4
11	6x12	Rosetta	Washer	12
12	519-05-24	Pedalino	Pedal	4
13	M6	Dado autobloccante basso	Thin self locking nut	12
14	074-05-24	Poggiapiedi regolabili	Adjustable footrest	4
15	M5x25	Vite TCEI	Screw	4
16	075-05-24	Terminale asta	Rod end	8
17	M6	Dado	Nut	8
18	M6x40	Vite TE	Bolt	4
19	521-05-24	Asta pedale rinvio	Pedal link bar	4
20	M5x16	Vite TE	Bolt	6
21	5	Rosetta frenante	Stopper washer	6
22	5x10	Rosetta	Washer	6
23	M6x25	Vite TE	Bolt	4
24	626-ZZ	Cuscinetto	Bearing	8

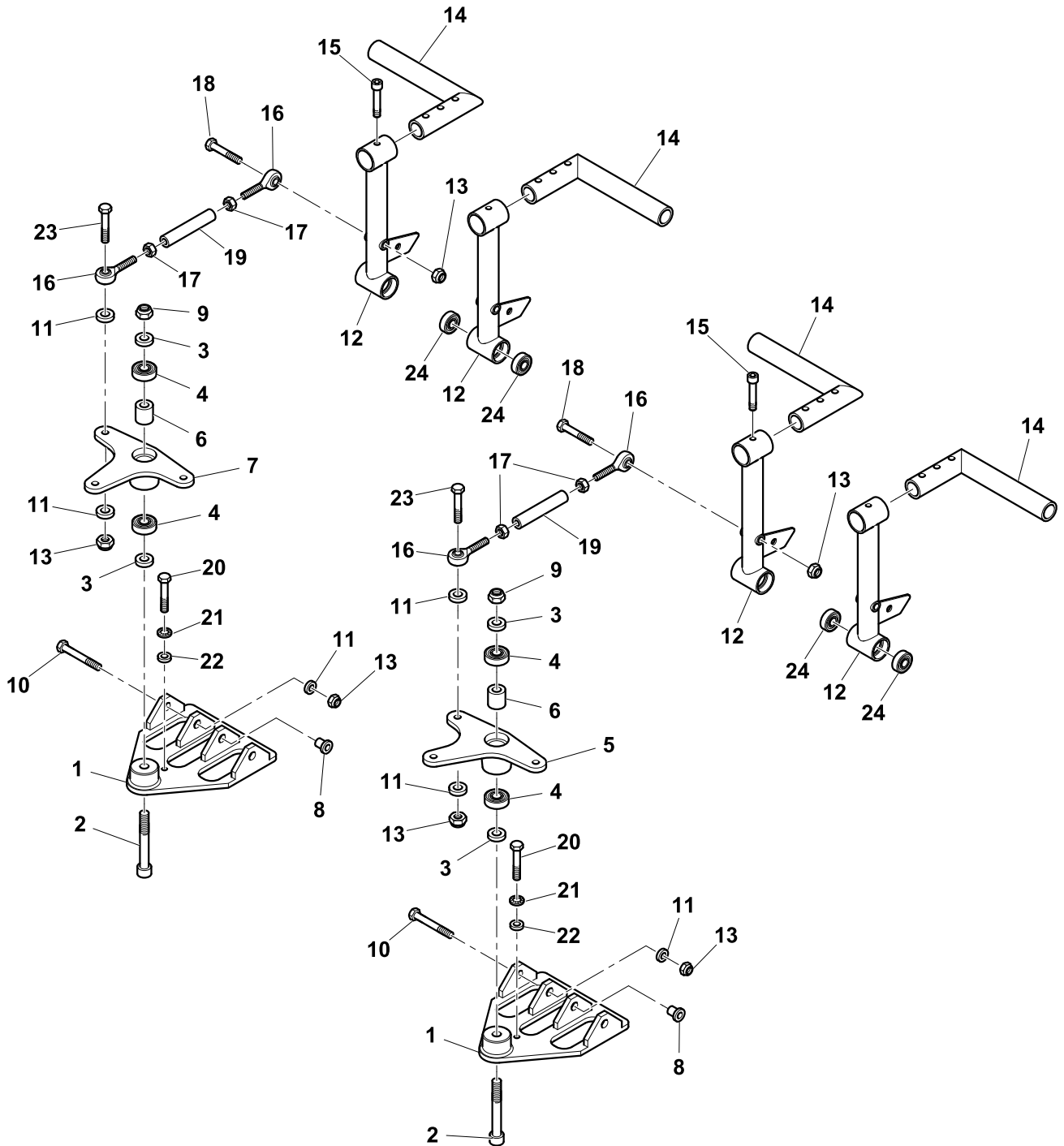
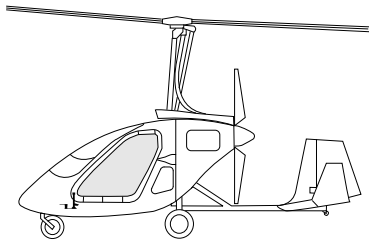
FIG. 05a - PEDALIERA 1ª parte
FIG. 05a - RUDDER PEDALS 1st part


FIG. 05b - PEDALIERA 2^a parte
FIG. 05b - RUDDER PEDALS 2nd part

Pos. Ref.	Codice Part Number	Descrizione	Description	Q.tà Q.ty
1	085-05-24	Morsetto fermacavo	Cable retainer	2
2	3x49	Cavo pedaliera	Rudder cable	1
3	075-05-24	Terminale asta	Rod end	4
4	M6x30	Vite TE	Bolt	1
5	6x12	Rosetta	Washer	15
6	M6	Dado autobloccante basso	Thin self locking nut	8
7	M6	Dado	Nut	4
8	520-05-24	Asta rinvio pedaliera lato pilota	Pedals link rod - pilot side	1
9	522-05-24	Asta rinvio pedaliera lato co-pilota	Pedals link rod - co-pilot side	1
10	M6x25	Vite TE	Bolt	2
11	311-05-24	Puleggia grande	Big pulley	3
12	626-ZZ	Cuscinetto	Bearing	8
13	083-05-24	Guidacavo	Cable retainer	5
14	084-05-24	Puleggia	Pulley	5
15	M6x80	Vite TE	Bolt	2
16	269-05-24	Nicopress	Nicopress	2
17	082-05-24	Redancia	Thimble	2
18	MS21255-3RS	Occhiello tenditore destro	Cable eye end (right)	1
19	MS21251-B3S	Tenditore	Turn buckle barrel	1
20	M6x40	Vite TE	Bolt	4
21	MS21255-3LS	Occhiello tenditore sinistro	Cable eye end (left)	1
22	521-05-24	Asta pedale rinvio	Pedal link bar	4
23	654-05-24	Guidacavo puleggia grande	Cable retainer for big pulley	3
24	M6x90	Vite TE	Bolt	1
25	6x24	Rosetta	Washer	2

FIG. 05b - PEDALIERA 2^a parte
 FIG. 05b - RUDDER PEDALS 2nd part

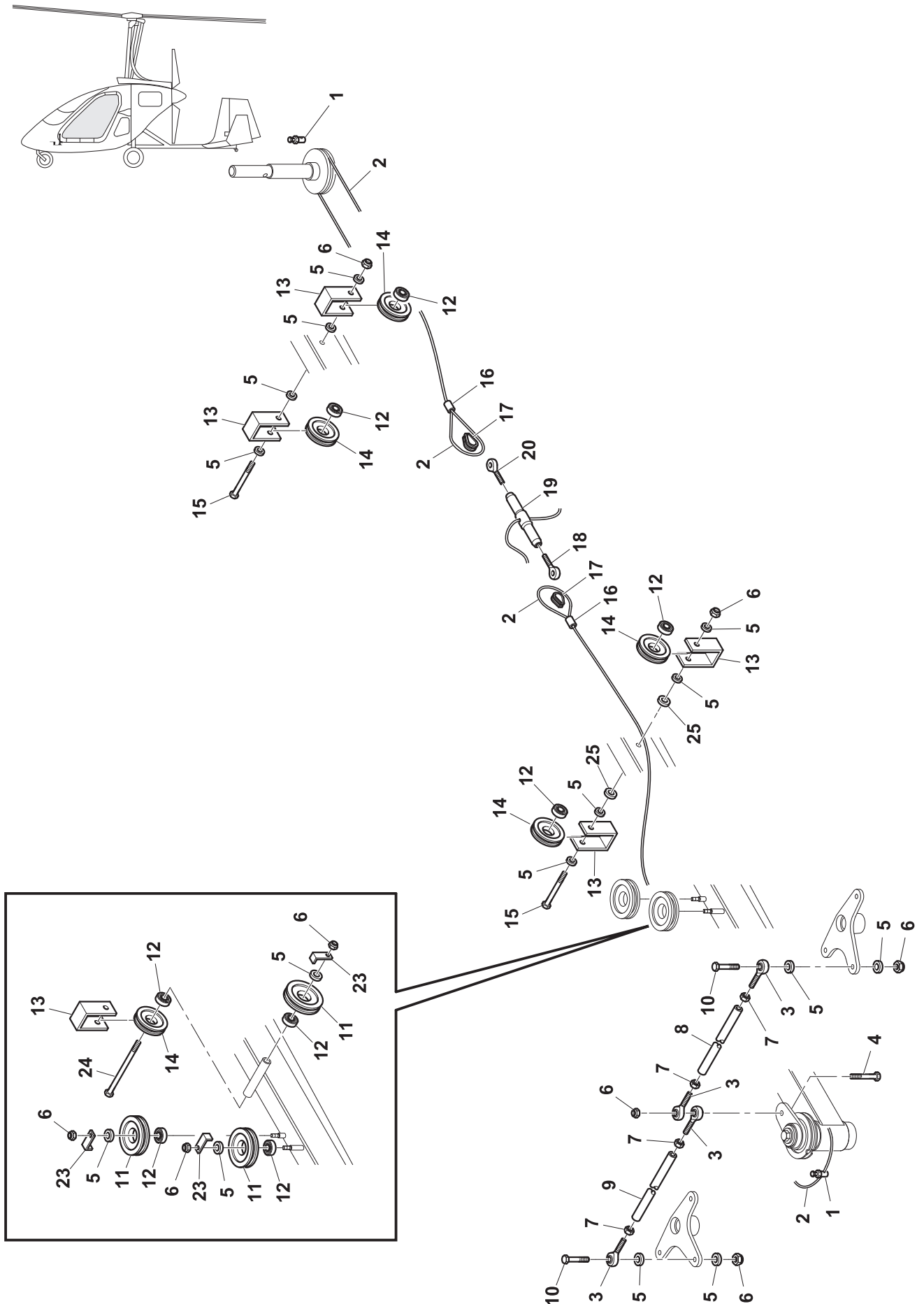


FIG. 06 - PIANI DI CODA

FIG. 06 - TAIL PLANES

Pos. Ref.	Codice Part Number	Descrizione	Description	Q.tà Q.ty
1	086-06-24	Perno	Pivot	1
2	6002-ZZ	Cuscinetto	Bearing	2
3	M5x25	Vite TE	Bolt	1
4	5x10	Rosetta	Washer	3
5	M5	Dado autobloccante	Self locking nut	4
6	087-06-24	Bronzina	Bushing	1
7	5x20	Rosetta	Washer	6
8	089-06-24	Perno	Pivot joint	1
9	169-06-24	Vite forata in testa	Drilled head bolt	2
10	090-06-24	Piano di coda	Tail plane	1
11	091-06-24	Direzionale	Rudder	1
12	092-06-24	Aletta compensatrice	Trim tab	1
13	M3x10	Vite TS	Screw	7
14	M3	Dado autobloccante	Self locking nut	7
15	M5x65	Vite TCEI	Screw	3

FIG. 06 - PIANI DI CODA
FIG. 06 - TAIL PLANES

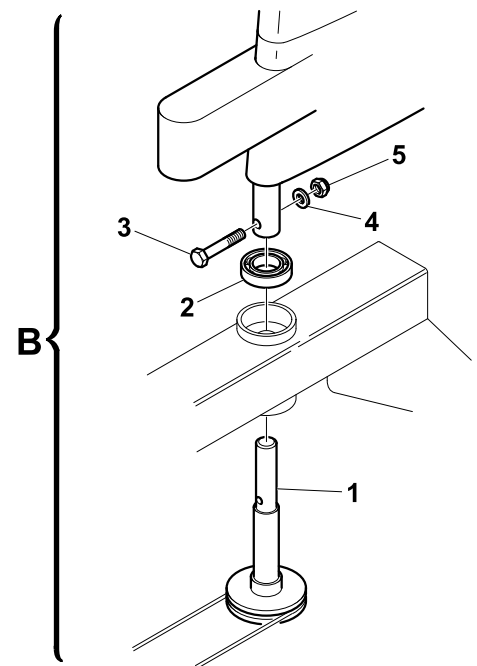
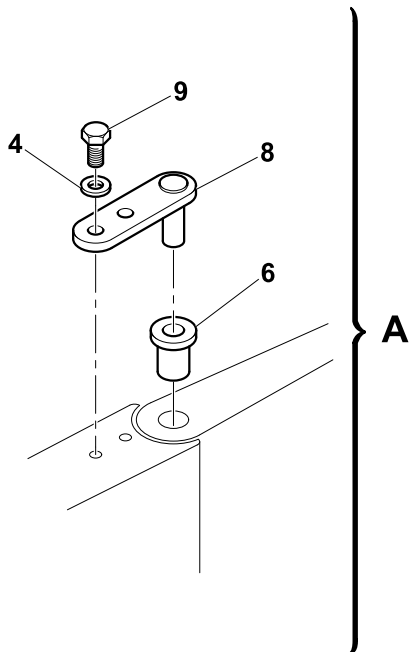
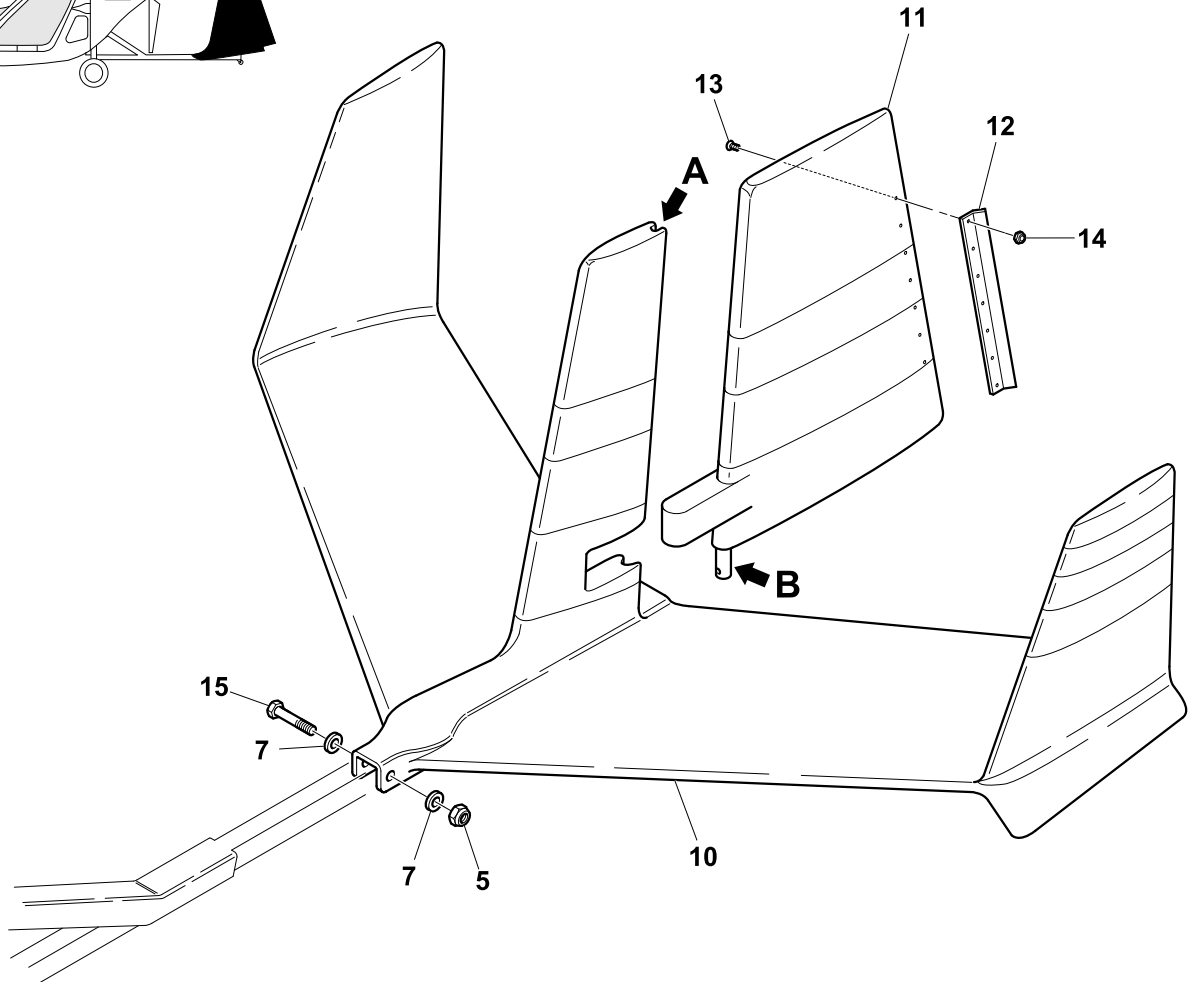
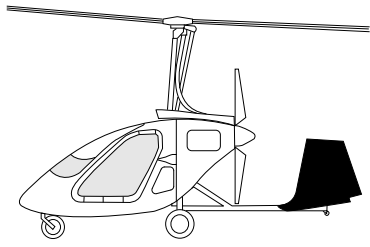


FIG. 07 - RUOTINO

FIG. 07 - NOSE WHEEL ASSEMBLY

Pos. Ref.	Codice Part Number	Descrizione	Description	Q.tà Q.ty
1	619-07-24	Forcella anteriore	Nose wheel fork	1
2	M12x160	Vite TE	Bolt	1
3	427-07-24	Distanziale	Spacer	2
4	6201-LU	Cuscinetto	Bearing	2
5	270-07-24	Semicerchi	Half rim	2
6	4.00,4 6pr	Copertone	Tire	1
7	4.00-4	Camera d'aria	Tube	1
8	M6	Dado autobloccante	Self locking nut	5
9	M12	Dado autobloccante	Self locking nut	1
10	6005-2Z	Cuscinetto	Bearing	1
11	524-07-24	Distanziale cuscinetti	Bearing spacer	1
12	51105	Cuscinetto	Bearing	1
13	6004-2Z	Cuscinetto	Bearing	1
14	525-07-24	Puleggia	Pulley	1
15	526-07-24	Chiavetta	Key	2
16	527-07-24	Comando pedaliera	Control block	1
17	6x24	Rosetta	Washer	1
18	6	Rosetta dentata	Lock washer	1
19	M6x16	Vite TE	Bolt	1

FIG. 07 - RUOTINO
FIG. 07 - NOSE WHEEL ASSEMBLY

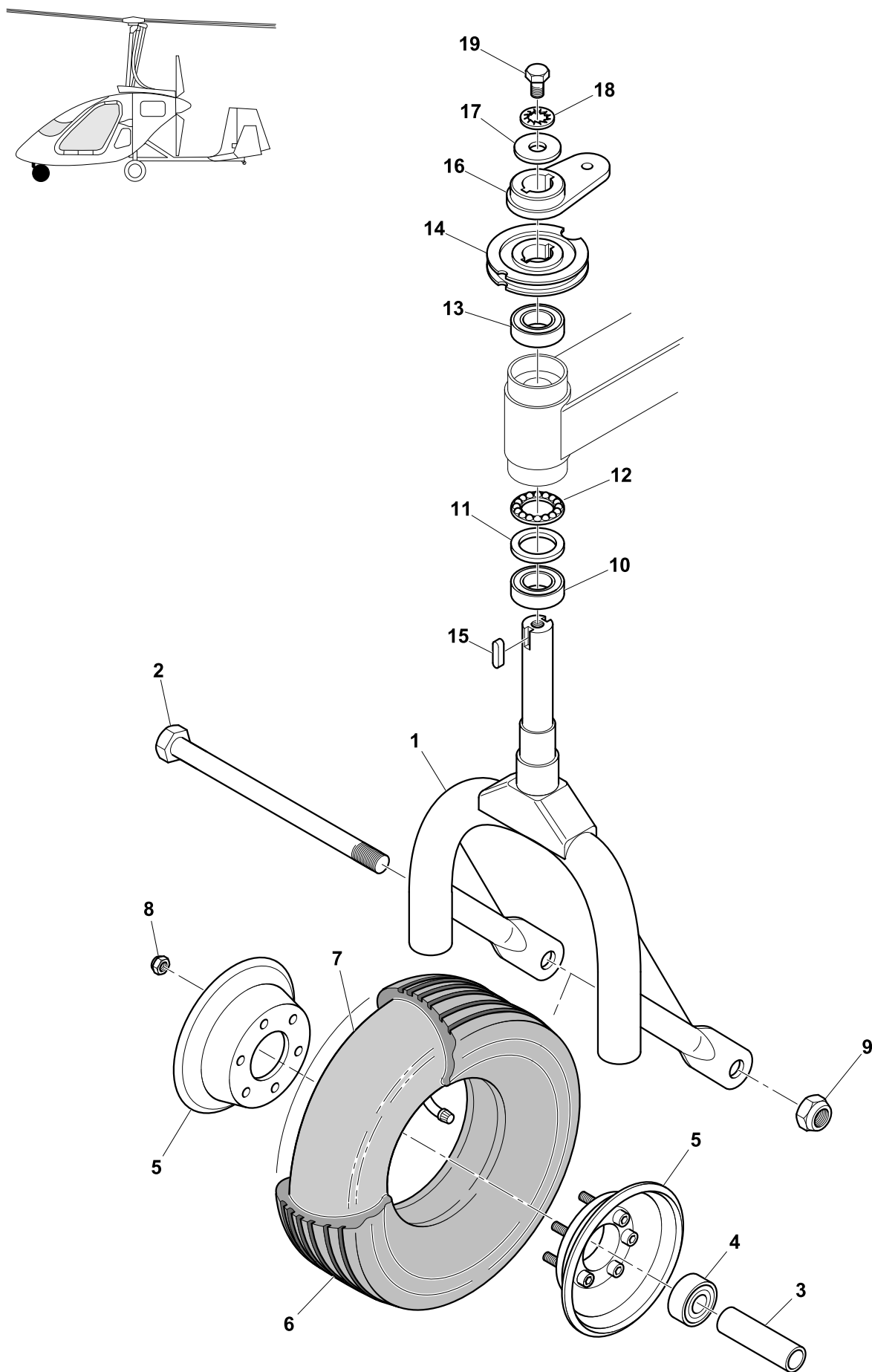


FIG. 08a - CABINA 1ª parte

FIG. 08a - COCKPIT 1st part

Pos. Ref.	Codice Part Number	Descrizione	Description	Q.tà Q.ty
1	009-08-24	Supporto cabina	Cockpit support	2
2	4,8x16	Rivetto	Rivet	4
3	M5	Inserto filettato	Threaded insert	2
4	M5x16	Vite TBEI	Screw	2
5	5	Rosetta frenante	Stopper washer	2
6	5x15	Rosetta	Washer	4
7	M6x16	Vite TBEI	Screw	2
8	6x24	Rosetta	Washer	2
9	2,5x6	Rivetto	Rivet	4
10	M6	Dado autobloccante basso	Thin self locking nut	2
11	528-08-24	Cabina	Cockpit	1
12	622-08-24	Gomma protettiva	Protective rubber	1
13	M5x12	Vite TB	Screw	2
14	M5	Dado autobloccante basso	Thin self locking nut	2
15	538-08-24	Portello	Hatch	1
16	539-08-24	Chiusura 1/4 giro portello	1/4 turn hatch locking	2
17	537-08-24	Cerniera portello	Hatch hinge	1
18	634-08-24	Maniglia	Handle	2
19	M3x20	Vite TB	Screw	2
20	3x6	Rosetta	Washer	2
21	M3	Dado autobloccante	Self locking nut	2
22	542-08-24	Bussola	Bushing	2
23	543-08-24	Camma	Cam	2
24	544-08-24	Supporto PVC	PVC support	4
25	M4x25	Vite TB	Screw	4
26	4	Rosetta frenante	Stopper washer	4
27	545-08-24	Blocchetto triangolare	Triangular block	2
28	M4x12	Vite TS	Screw	12
29	550-08-24	Leva	Lever	2
30	M5x10	Vite TB	Screw	4
31	5x16	Spina elastica	Elastic pin	2
32	551-08-24	Pomolo leva chiusura	Closing lever knob	2
33	549-08-24	Blocchetto chiusura	Closing block	4
34	548-08-24	Perno	Pin	4
35	5x14	Spina elastica	Elastic pin	6
36	546-08-24	Terminale asta di chiusura	Closing rod end	8
37	M5	Dado	Nut	8
38	547-08-24	Asta chiusura	Closing rod	4
39	3,2x6	Rivetto	Rivet	12

FIG. 08a - CABINA 1ª parte
 FIG. 08a - COCKPIT 1st part

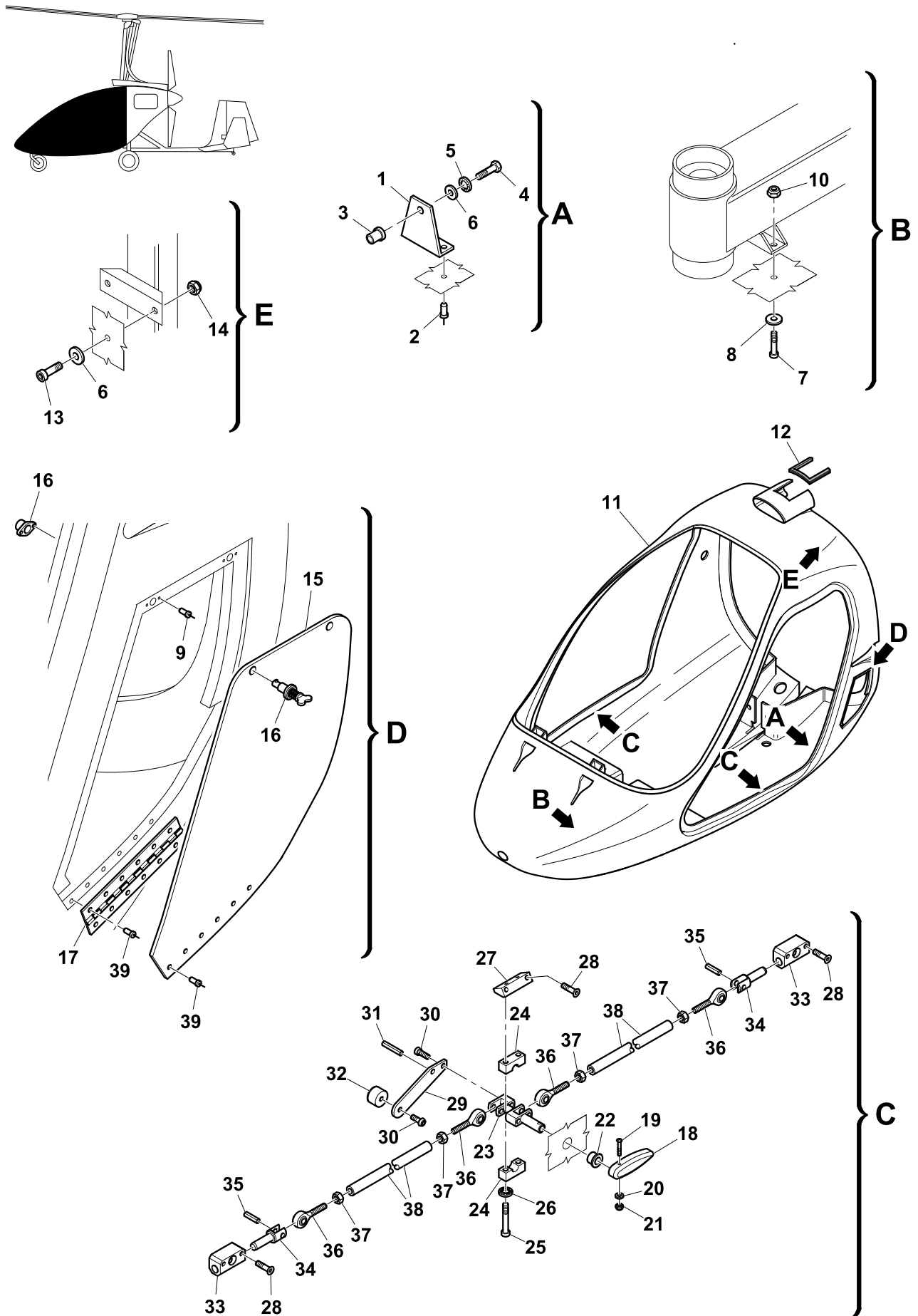


FIG. 08b - CABINA 2^a parte**FIG. 08b - COCKPIT 2nd part**

Pos. Ref.	Codice Part Number	Descrizione	Description	Q.tà Q.ty
1	530-08-24	Portiera sinistra	Left door	1
2	535-08-24	Guarnizione	Gasket	6m
3	529-08-24	Portiera destra	Right door	1
4	541-08-24	Pomolo	Knob	2
5	536-08-24	Cerniera portiera	Door hinge	2
6	M3x30	Vite TS	Screw	10
7	3x6	Rosetta	Washer	20
8	M3	Dado autobloccante	Self locking nut	20
9	M3x10	Vite TS	Screw	10
10	534-08-24	Piastrina fissaggio martinetto	Jack fixing plate	2
11	M4x35	Vite TS	Screw	4
12	4x8	Rosetta	Washer	4
13	M4	Dado autobloccante	Self locking nut	8
14	M6	Dado autobloccante basso	Thin self locking nut	4
15	533-08-24	Martinetto	Jack	2
16	M6x16	Vite TBEI	Screw	4
17	532-08-24	Supporto inferiore martinetto	Jack lower support	2
18	M4x12	Vite TS	Screw	4
19	M6	Dado	Nut	8
20	540-08-24	Perno chiusura	Locking pin	4

FIG. 08b - CABINA 2ª parte
FIG. 08b - COCKPIT 2nd part

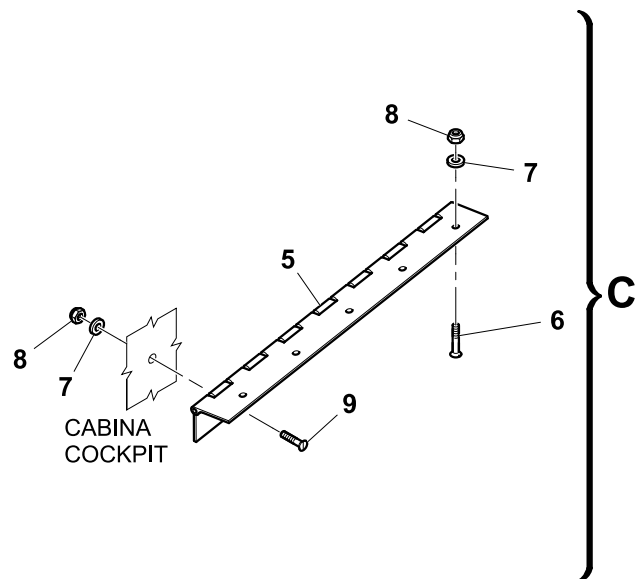
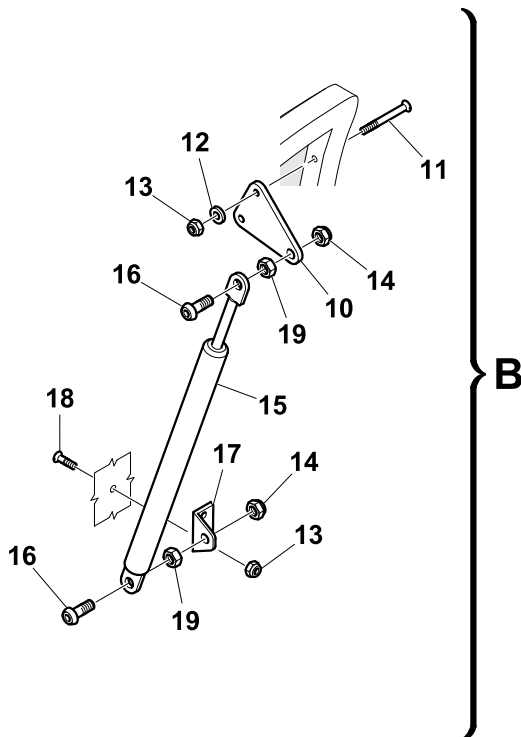
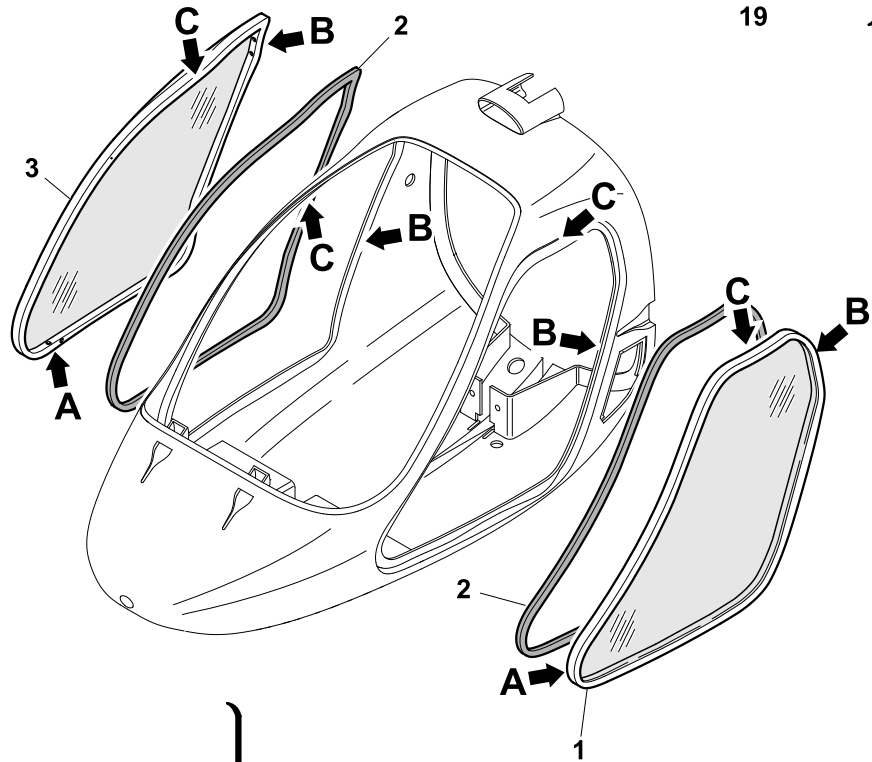
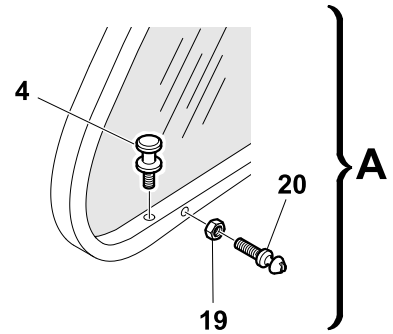
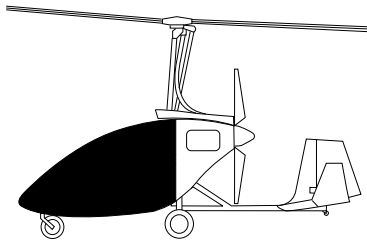


FIG. 09 - INTERNI CABINA

FIG. 09 - COCKPIT INSIDE

Pos. Ref.	Codice Part Number	Descrizione	Description	Q.tà Q.ty
1	553-09-24	Paratia	Bulkhead	1
2	014-09-24	Targhetta dati	Data plate	1
3	554-09-24	Consolle	Console	1
4	555-09-24	Cruscotto	Instrument panel frame	1
5	101-09-24	Bordino protettivo	Finishing protective edge	2
6	M5x40	Vite TE	Bolt	4
7	5x20	Rosetta	Washer	4
8	5x10	Rosetta	Washer	4
9	M5	Dado autobloccante	Self locking nut	4
10	M5x30	Vite TB	Screw	4
11	5	Rosetta frenante	Stopper washer	10
12	5x15	Rosetta	Washer	10
13	M5x16	Vite TE	Bolt	6
14	M5	Inserto filettato	Threaded insert	10
15	M4x12	Vite TB	Screw	55
16	556-09-24	Rosetta nylon	Nylon washer	55
17	M4	Inserto filettato	Threaded insert	79
18	613-09-24	Palpebra cruscotto	Instrument panel eyelid	1
19	614-09-24	Guarnizione adesiva	Sealing tape	1
20	615-09-24	Velcro dual lock	Dual lock velcro	3
21	616-09-24	Clip fissaggio palpebra	Eyelid fixing clip	3
22	620-09-24	Bocchetta areazione	Louver	2
23	621-09-24	O-ring tenuta bocchetta areazione	Seal o-ring for louver	2
24	622-09-24	Bordo termo adesivo	Adhesive edging strip	1
25	2,5x6	Rivetto	Rivet	4
26	628-09-24	Portello interno	Inner hatch	1
27	627-09-24	Cerniera portello interno	Inner hatch hinge	1
28	630-09-24	Schienale cuscino pilota	Pilot backrest cushion	1
29	632-09-24	Schienale cuscino co-pilota	Co-pilot backrest cushion	1
30	629-09-24	Seduta cuscino pilota	Pilot seat cushion	1
31	631-09-24	Seduta cuscino co-pilota	Co-pilot seat cushion	1
32	633-09-24	Clip fissaggio cuscini	Cushion snap fastener	14
33	3,2x6	Rivetto	Rivet	14

FIG. 09 - INTERNI CABINA
FIG. 09 - COCKPIT INSIDE

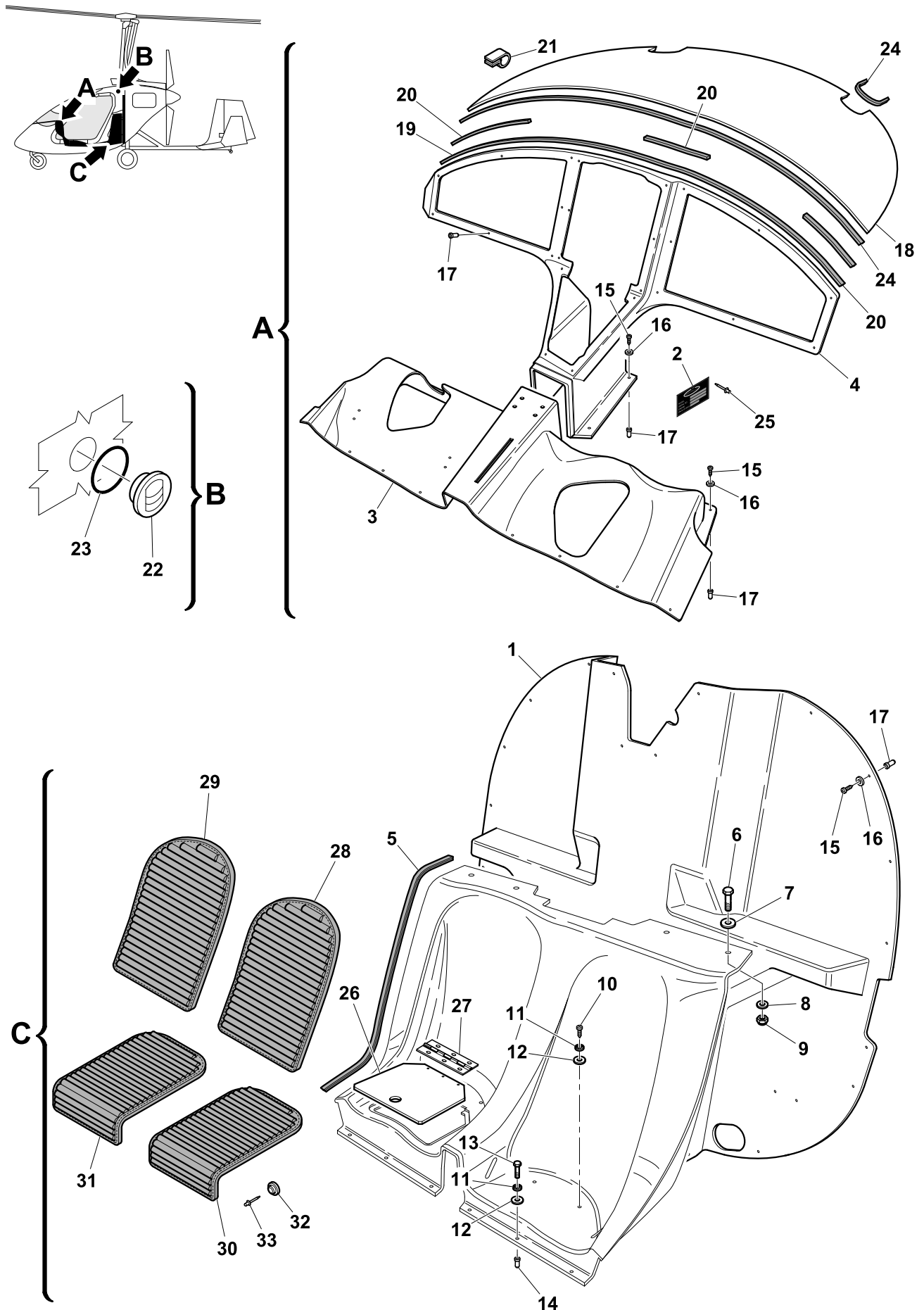
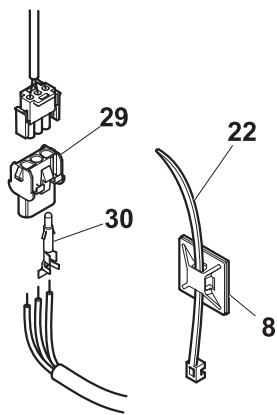
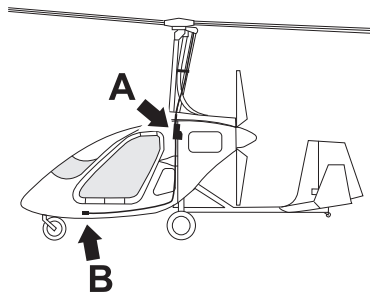


FIG. 10 - TRIM

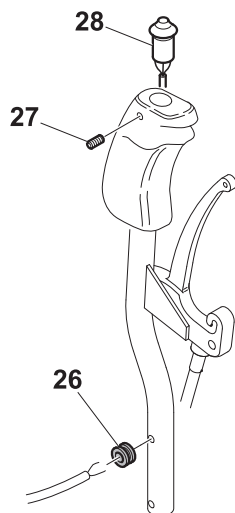
FIG. 10 - TRIM

Pos. Ref.	Codice Part Number	Descrizione	Description	Q.tà Q.ty
1	102-10-24	Attuatore trim	Trim actuator	1
2	271-10-24	Cremagliera	Rack	1
3	M6x10	Vite TCEI	Screw	2
4	272-10-24	Vite fissaggio trim	Trim fixing screw	4
5	8	Rosetta frenante	Lock washer	4
6	8x16	Rosetta	Washer	4
7	2x1500	Cavo	Cable	1
8	116-10-24	Placchetta adesiva	Adhesive retainer	4
9	6	Rosetta dentata	Lock washer	1
10	267-10-24	Vite fissaggio cavo	Cable retainer screw	1
11	M6	Dado	Nut	4
12	M6x20	Registro	Adjuster	2
13	103-10-24	Capoguaina	Cable housing ferrule	2
14	104-10-24	Guaina	Cable housing	1
15	M5x65	Vite TCEI	Screw	2
16	5x10	Rosetta	Washer	4
17	105-10-24	Supporto cavo trim	Trim cable support	1
18	106-10-24	Molla piccola	Small spring	1
19	107-10-24	Morsetto fermacavo	Cable retainer	1
20	108-10-24	Forcella fissaggio	Fixing fork	1
21	M5x16	Vite TE	Bolt	1
22	2,4x197	Fascetta Ty-wrap	Nylon ty-wrap	4
23	M5	Dado autobloccante basso	Thin self locking nut	3
24	109-10-24	Molla grande	Big spring	1
25	110-10-24	Moschettone	Spring catch	1
26	111-10-24	Passacavo in gomma	Rubber ring	1
27	M4x6	Vite senza testa	Grub screw	1
28	112-10-24	Interruttore comando trim	Trim switch	1
29	115-10-24	Connettore tripolare femmina	Female connector	1
30	114-10-24	Contatto maschio	Male contact	3

FIG. 10 - TRIM
FIG. 10 - TRIM



A



B

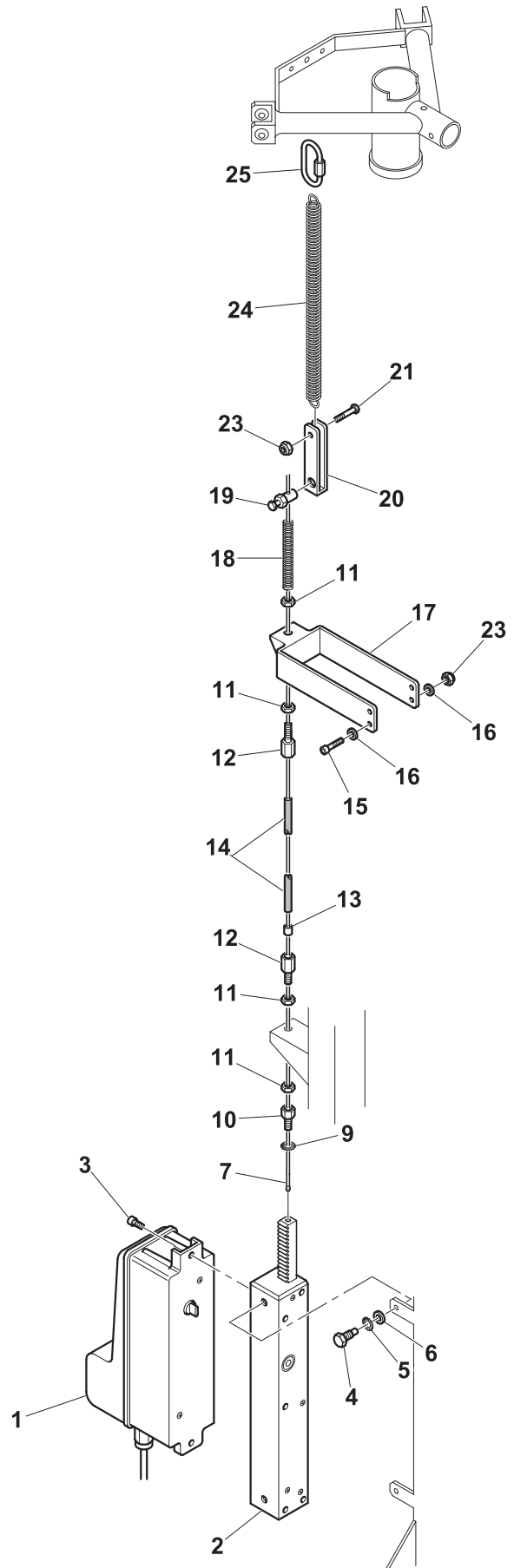


FIG. 11 - ELICA E PREROTAZIONE
FIG. 11 - PROPELLER & PREROTATION

Pos. Ref.	Codice Part Number	Descrizione	Description	Q.tà Q.ty
1	117-11-24	Assieme Prerotazione	Prerotation assembly	1
2	118-11-24	Flessibile interno	Flexible shaft	1
3	119-11-24	Guaina flessibile	Prerotation outer case	1
4	6	Rosetta frenante	Stopper washer	4
5	M6x16	Vite TE	Bolt	4
6	M6x30	Vite TE	Bolt	4
7	6x12	Rosetta	Washer	24
8	6x18	Rosetta	Washer	8
9	M6	Dado autobloccante basso	Thin self locking nut	10
10	120-11-24	Supporto prerotazione	Prerotation support bracket	1
11	121-11-24	Braccetto di supporto	Support arm	2
12	M5x20	Registro	Adjuster	1
13	M8x20	Vite TE	Bolt	8
14	8x16	Rosetta	Washer	14
15	M8	Dado autobloccante basso	Thin self locking nut	2
16	8	Rosetta frenante	Stopper washer	6
17	M10x25	Vite TCEI	Screw	2
18	10	Rosetta Grower	Spring lock washer	2
19	10x20	Rosetta	Washer	2
20	M4x12	Vite TCEI	Screw	1
21	123-11-24	Guida cinghia	Belt retainer	1
22	M4	Dado autobloccante	Self locking nut	1
23	124-11-24	Puleggia	Pulley	1
24	A 28	Cinghia	V-type belt	2
25	125-11-24	Gruppo elica	Propeller assembly	1
26	415-11-24	Leva prerotazione	Prerotation lever	1
27	M5x25	Vite TE	Bolt	1
28	268-11-24	Bronzina	Bushing	1
29	5x10	Rosetta	Washer	2
30	M5	Dado autobloccante basso	Thin self locking nut	1
31	1,5x3900	Cavo	Cable	1
32	127-11-24	Registro	Adjuster	1
33	103-11-24	Capoguaina	Cable housing ferrule	2
34	104-11-24	Guaina	Cable housing	3m
35	107-11-24	Morsetto fermacavo	Cable retainer	1
36	284-11-24	Vite TCEI	Screw	6
37	193-11-24	Supporto guaina flessibile	Prerotation shaft support	1
38	M6x30	Vite TCEI	Screw	6
39	4B-25-45	Fascetta	Clamp	2
40	626-11-24	Molla leva prerotazione	Prerotation lever spring	1
41	2,5x1000	Cavo	Cable	1
42	341-11-24	Molla	Spring	1
43	617-11-24	Supporto fermo comando	Cable support	1
44	111-11-24	Passacavo in gomma	Rubber ring	1
45	M4x12	Vite TB	Screw	4
46	M4	Inserto filettato	Threaded insert	4
47	343-11-24	Gancio fermo comando	Control stopper eye hook	1
48	344-11-24	Capo cavo	Cable terminal	2

FIG. 12 - ARRICCHITORE**FIG. 12 - CHOKE ASSEMBLY**

Pos. Ref.	Codice Part Number	Descrizione	Description	Q.tà Q.ty
1	128-12-24	Leva arricchitore	Choke lever	1
2	M5x10	Vite TE	Bolt	2
3	5x10	Rosetta	Washer	2
4	5	Rosetta frenante	Stopper washer	2
5	107-12-24	Morsetto fermacavo	Cable retainer	1
6	1,5x2500	Cavo	Cable	1
7	103-12-24	Capoguaina	Cable housing ferrule	6
8	131-12-24	Guaina Hi-Tech	Cable housing	3,5m
9	132-12-24	Sdoppiatore	Splitter	1
10	2,4x197	Fascetta Ty-wrap	Nylon ty-wrap	2
11	133-12-24	Morsetto fermacavo	Cable retainer	2

FIG. 12 - ARRICCHITORE
FIG. 12 - CHOKE ASSEMBLY

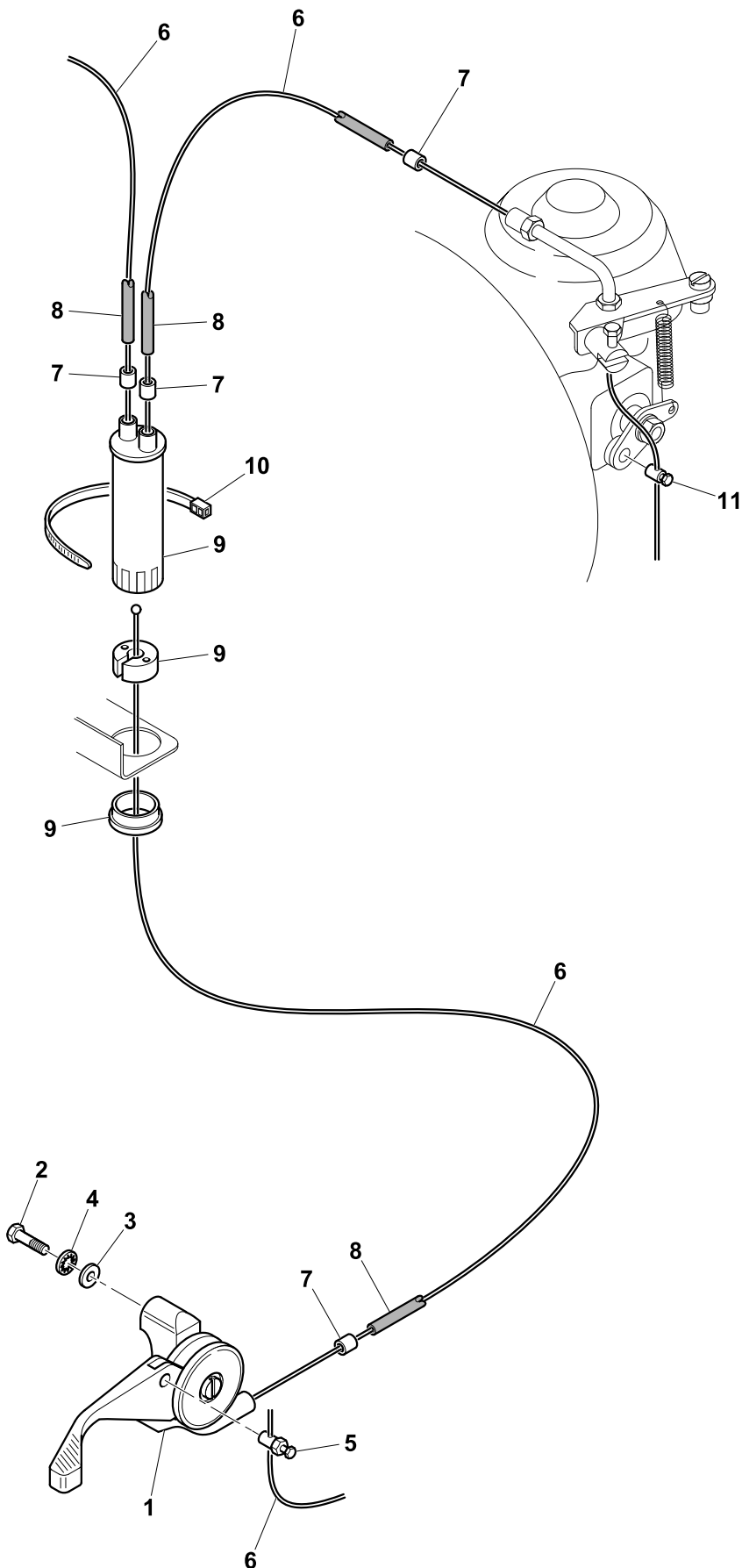
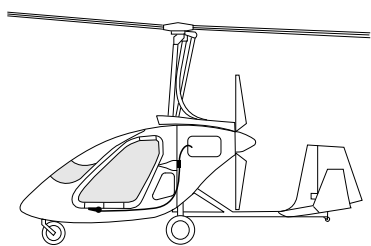


FIG. 13 - IMPIANTO FRENANTE

FIG. 13 - BRAKING ASSEMBLY

Pos. Ref.	Codice Part Number	Descrizione	Description	Q.tà Q.ty
1	135-13-24	Manetta freno	Brake lever	1
2	107-13-24	Morsetto fermacavo	Cable retainer	2
3	5x10	Rosetta	Washer	4
4	M5x12	Vite testa bombata	Screw	2
5	M5	Dado autobloccante basso	Thin self locking nut	2
6	103-13-24	Capoguaina	Cable housing ferrule	4
7	1,5x2000	Cavo	Cable	2
8	131-13-24	Guaina Hi-Tech	Cable housing	3,5m
9	278-13-24	Fascetta stringiguaina	Cable Housing Clamp	1
10	2,4x180	Fascetta Ty-wrap	Nylon ty-wrap	2
11	116-13-24	Placchetta adesiva	Adhesive retainer	2
12	M5x20	Registro	Adjuster	2
13	M5	Dado	Nut	4
14	279-13-24	Assieme pompa freni	Brake pump assy	1
15	M5x65	Vite TCEI	Socket head screw	2
16	5	Rosetta frenante	Stopper washer	2
17	5x15	Rosetta	Washer	6
18	141-13-24	Raccordo 90°	90° Connection	1
19	2,5x4	Tubo Rilsan	Brake line pipe	2,5m
20	142-13-24	Raccordo tre vie	3-ways connection	1
21	143-13-24	Raccordo	Connection	2
22	10x14	Rosetta in rame	Copper washer	4
23	144-13-24	Raccordo spurgo freni	Brake drain connection	2

FIG. 14 - MANETTA GAS

FIG. 14 - THROTTLE

Pos. Ref.	Codice Part Number	Descrizione	Description	Q.tà Q.ty
1	557-14-24	Manetta gas pilota	Pilot throttle	1
2	M5x10	Vite TB	Screw	4
3	M5	Dado autobloccante basso	Thin self locking nut	8
4	558-14-24	Barra torsione	Torsion rod	1
5	559-14-24	Manetta gas co-pilota	Co-pilot throttle	1
6	017-14-24	Blocchetto PVC	PVC block	2
7	M5x35	Vite TB	Screw	4
8	5x10	Rosetta	Washer	8
9	MW3	Treminale bowden	Bowden end	2
10	AN3-11A	Vite TE	Bolt	1
11	M4x25	Vite	Screw	1
12	MS 21042-3	Dado leggero per AN3	Light nut for AN3	1
13	638-14-24	Bowden carburatore	Carburettor Bowden	2
14	4	Rosetta grower	Spring lock washer	1
15	640-14-24	Dado	Nut	1
16	639-14-24	Morsetto Bowden	Bowden clamp	1

FIG. 14 - MANETTA GAS
FIG. 14 - THROTTLE

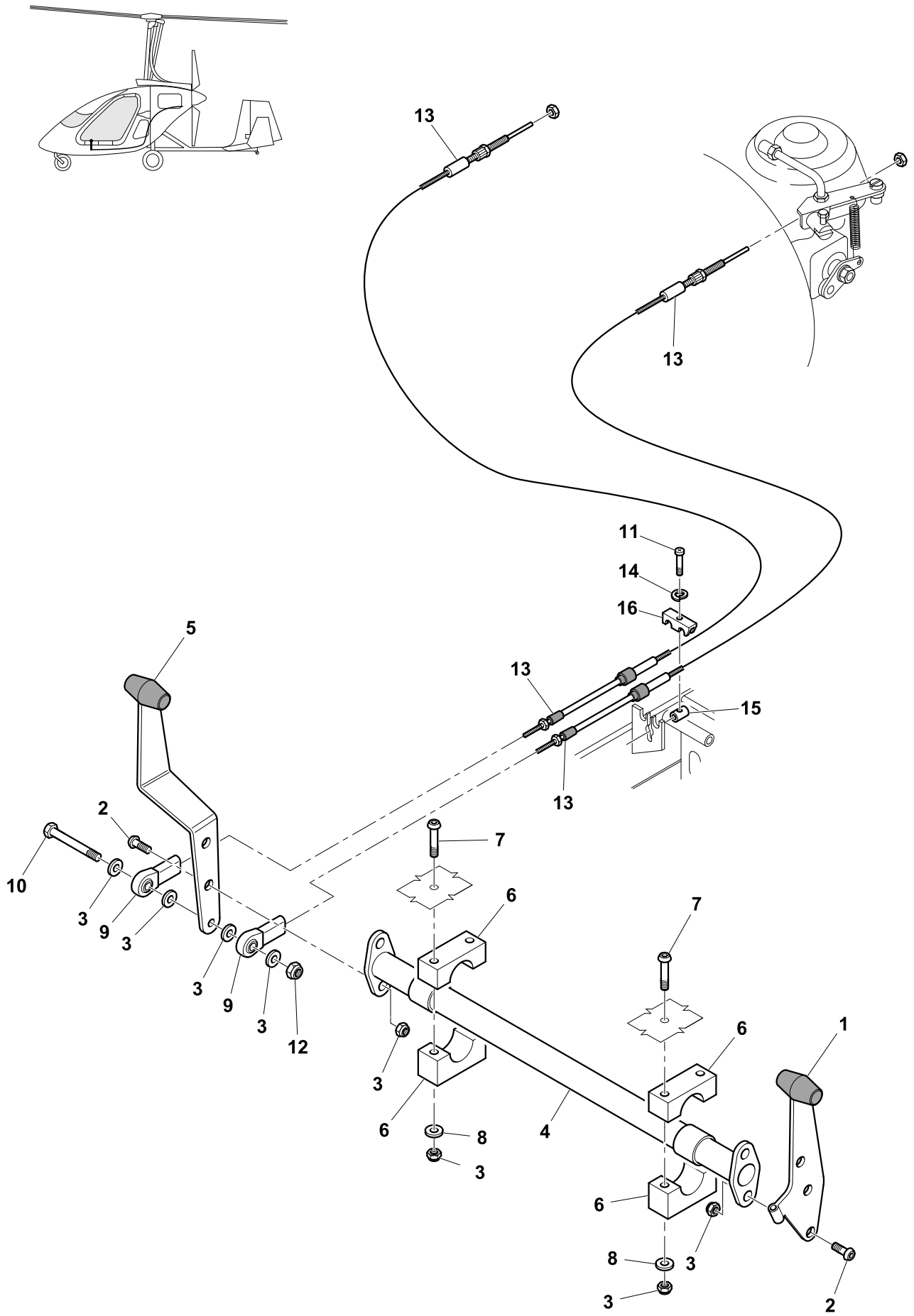


FIG. 15 - RUOTA

FIG. 15 - MAIN WHEEL ASSEMBLY

Pos. Ref.	Codice Part Number	Descrizione	Description	Q.tà Q.ty
1	161-15-24	Perno ruota	Wheel axle	2
2	162-15-24	Supporto parafango	Wheel pants support	2
3	M6x45	Vite TE	Bolt	8
4	6x24	Rosetta	Washer	8
5	M6	Dado	Nut	8
6	163-15-24	Ceppo freno	Brake-block	2
7	164-15-24	Mozzetto	Brake stock	2
8	165-15-24	Cerchione interno	Inner half-rim	2
9	4.00-6 6pr	Copertone	Tire	2
10	4.00-6	Camera d'aria	Tube	2
11	166-15-24	Cerchione esterno	Outer half-rim	2
12	280-15-24	Dado autobloccante basso	Thin self locking nut	2
13	6x18	Rosetta	Washer	12
14	M6x25	Vite TCE	Bolt	12
15	167-15-24	Parafango	Wheel pant	2
16	M8x50	Vite TE	Bolt	2
17	8	Rosetta dentata	Lock washer	2
18	8x24	Rosetta	Washer	4
19	168-15-24	Distanziale	Spacer	2
20	M5x16	Vite TE	Bolt	4
21	5	Rosetta frenante	Stopper washer	4
22	5x20	Rosetta	Washer	4
23	M4x40	Vite	Bolt	4
24	281-15-24	Distanziale	Spacer	4
25	282-15-24	Molla	Recovery spring	4
26	M4	Dado autobloccante	Self locking nut	4
27	6	Rosetta frenante	Stopper washer	12

FIG. 15 - RUOTA
FIG. 15 - MAIN WHEEL ASSEMBLY

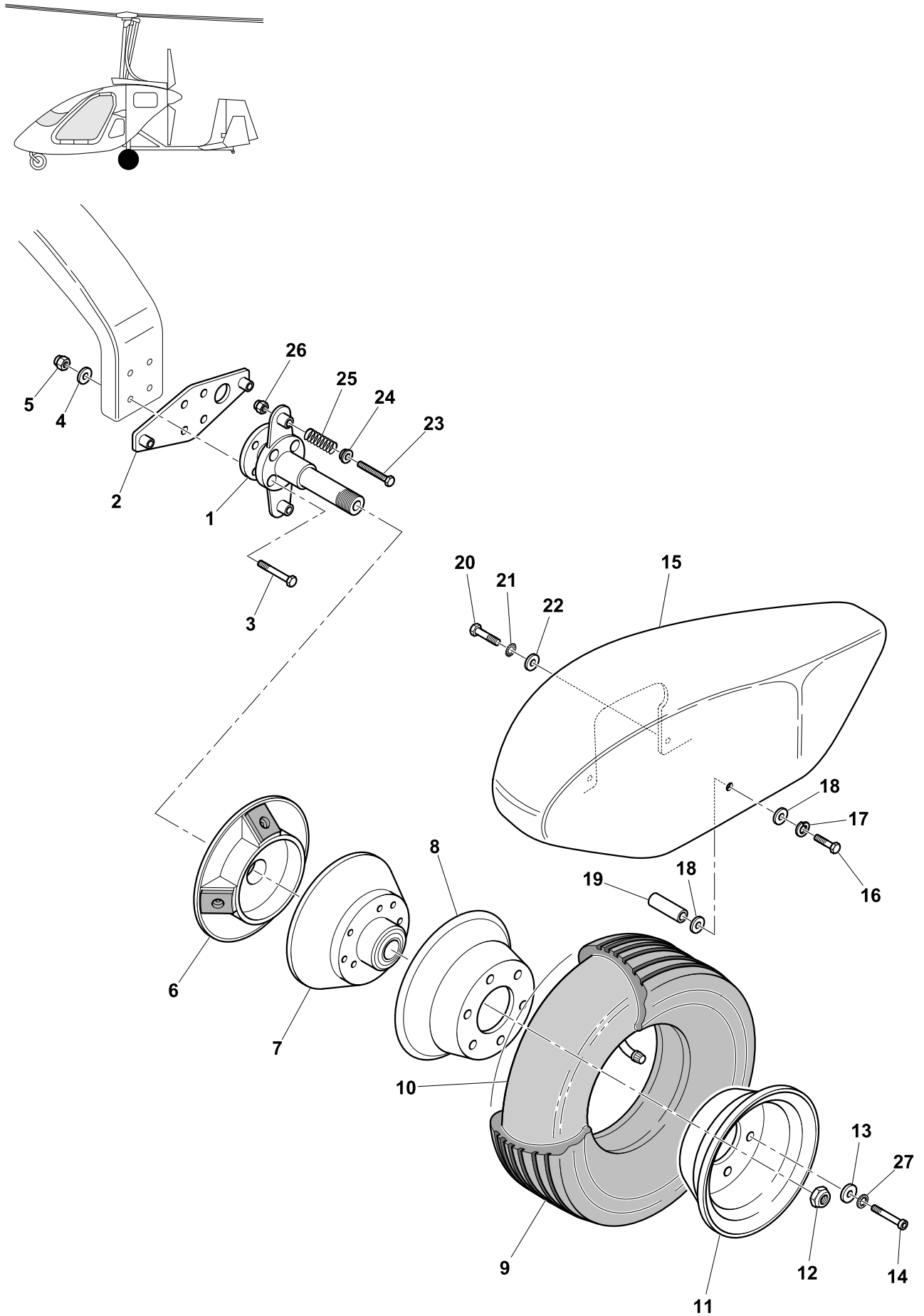


FIG. 16 - IMPIANTO CARBURANTE

FIG. 16 - FUEL SYSTEM

Pos. Ref.	Codice Part Number	Descrizione	Description	Q.tà Q.ty
1	552-16-24	Serbatoio	Tank	1
2	170-16-24	Tappo serbatoio	Tank cap	1
3	4,8x300	Fascetta Ty-wrap	Nylon Ty-wrap	1
4	5x9	Tubo sfiato	Vent line	1
5	171-16-24	Spurgo	Drain	1
6	172-16-24	Rosetta in rame	Copper washer	1
7	173-16-24	Indicatore di livello	Fuel level indicator	1
8	M4x12	Vite TB	Screw	6
9	4	Rosetta frenante	Stopper washer	6
10	4x8	Rosetta	Washer	6
11	560-16-24	Ghiera tappo serbatoio	Tank cap ring	1
12	175-16-24	Tubo benzina	Fuel line	5m
13	176-16-24	Fascetta	Clamp	18
14	274-16-24	Filtro benzina	Fuel filter	1
15	561-16-24	Raccordo tre vie	3-ways connection	1
16	179-16-24	Tubetto benzina alle pompe	Fuel line to pumps	2
17	180-16-24	Fascetta fissaggio pompe	Pump clamp	4
18	ROTAX	Pompa carburante	Fuel pump	2
19	M5x12	Vite TE	Exagonal head screw	4
20	5x15	Rosetta	Washer	6
21	M5	Dado autobloccante basso	Thin self locking nut	6
22	5	Rosetta frenante	Stopper washer	2
23	181-16-24	Valvola di non-ritorno	Check valve	2
24	182-16-24	Raccordo tre vie	3-ways connection	1
25	M5x20	Vite TE	Bolt	2
26	183-16-24	Piastrina	Plate	1
27	562-16-24	Distanziale	Spacer	2
28	563-16-24	Cavallotto	El. connection	1
29	M5	Inserto filettato	Threaded insert	2
30	635-16-24	Fascetta tubo pompe carburante	Fuel pumps hose clamp	4
31	M4	Dado autobloccante	Self locking nut	2

FIG. 17 - IMPIANTO OLIO MOTORE

FIG. 17 - ENGINE OIL SISTEM

Pos. Ref.	Codice Part Number	Descrizione	Description	Q.tà Q.ty
1	564-17-24	Radiatore olio	Oil radiator	2
2	565-17-24	Raccordo radiatore olio	Oil radiator connection	2
3	566-17-24	Raccordo 90°	90° connection	2
4	567-17-24	Tubo valvola-radiatori	Valve-radiators hose	2
5	569-17-24	Tubo valvola-pompa	Valve-pump hose	1
6	568-17-24	Tubo serbatoio-valvola	Tank-valve hose	1
7	570-17-24	Tubo raccordo radiatori	Radiators connection hose	1
8	649-17-24	Fascetta tubi olio	Oil hoses clamp	12
9	571-17-24	Valvola termostatica	Thermostatic valve	1
10	M5x16	Vite TE	Bolt	4
11	5	Rosetta frenante	Stopper washer	4
12	5x15	Rosetta	Washer	4
13	572-17-24	Raccordo Banjo doppio	Double Banjo connection	1
14	573-17-24	Rosetta in rame	Copper washer	5
15	574-17-24	Raccordo nipple	Nipple connection	2
16	575-17-24	Distanziale	Spacer	1
17	ROTAX	Serbatoio olio	Oil tank	1
18	642-17-24	Raccordo 45° valvola termostatica olio	Oil thermostatic valve 45° connection	4
19	648-17-24	Fascetta fissaggio serbatoio olio	Oil tank fixing clamp	1
20	641-17-24	Tubo carter-serbatoio olio	Crankcase-oil tank hose	1
21	643-17-24	Raccordo Banjo 1/2"	1/2" Banjo connection	1
22	644-17-24	Gasket 1/2"	1/2" Gasket	2
23	645-17-24	Raccordo nipple 1/2"	1/2" Nipple connection	1
24	189-17-24	Fascetta ritorno olio	Oil backflow clamp	2
25	646-17-24	Tubo ritorno olio	Oil backflow hose	1
26	647-17-24	Raccordo 90° orientabile	Adjustable 90° connection	1
27	M5	Inserto filettato	Threaded insert	4
28	7x11	Tubo sfiato	Vent line	1

FIG. 17 - IMPIANTO OLIO MOTORE
FIG. 17 - ENGINE OIL SYSTEM

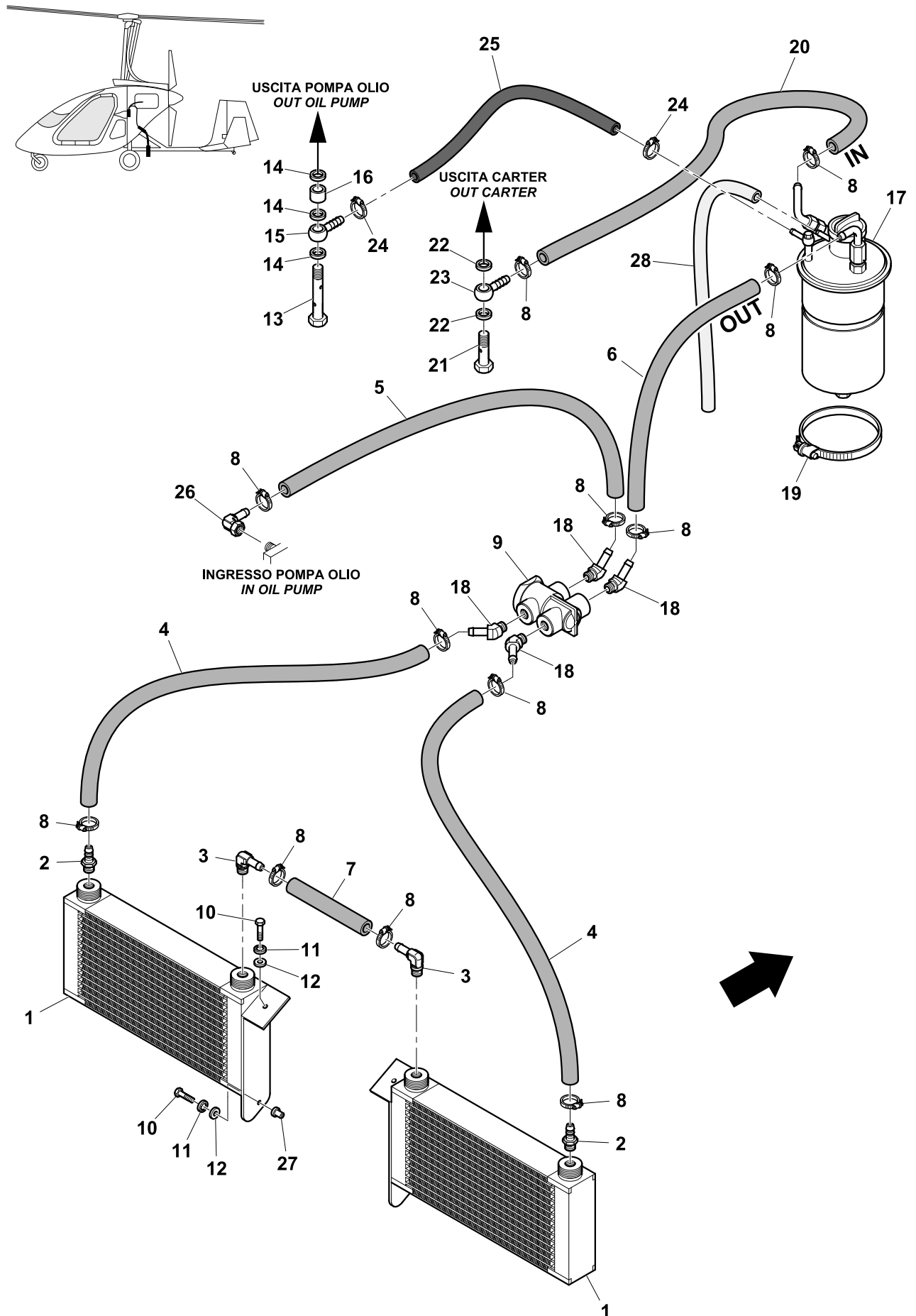


FIG. 18 - IMPIANTO LIQUIDO RAFFREDDAMENTO
FIG. 18 - COOLING SYSTEM

Pos. Ref.	Codice Part Number	Descrizione	Description	Q.tà Q.ty
1	ROTAX	Serbatoio recupero	Backflow tank	1
2	4,8x370	Fascetta Ty-wrap	Nylon Ty-wrap	2
3	175-18-24	Tubo	Hose	0,35 m
4	386-18-24	Supporto serbatoio recupero	Reservoir support	1
5	441-18-24	Fascetta	Clamp	8
6	618-18-24	Radiatore acqua	Water radiator	1
7	M5x16	Vite TE	Bolt	4
8	5	Rosetta frenante	Stopper washer	4
9	5x15	Rosetta	Washer	4
10	576-18-24	Tubo vaso espansione - valvola	Expansion tank - valve hose	1
11	577-18-24	Tubo valvola - radiatore	Valve - radiator hose	1
12	578-18-24	Tubo valvola - pompa	Valve - pump hose	1
13	579-18-24	Tubo radiatore - pompa	Radiator - pump hose	1
14	443-18-24	Valvola termostatica	Thermostat	1
15	580-18-24	Raccordo tre vie alla pompa	3-way connection to the pump	1
16	176-18-24	Fascetta	Clamp	1
17	M5	Inserto filettato	Threaded insert	1
18	M6x10	Vite TB	Screw	2

FIG. 18 - IMPIANTO LIQUIDO RAFFREDDAMENTO
FIG. 18 - COOLING SYSTEM

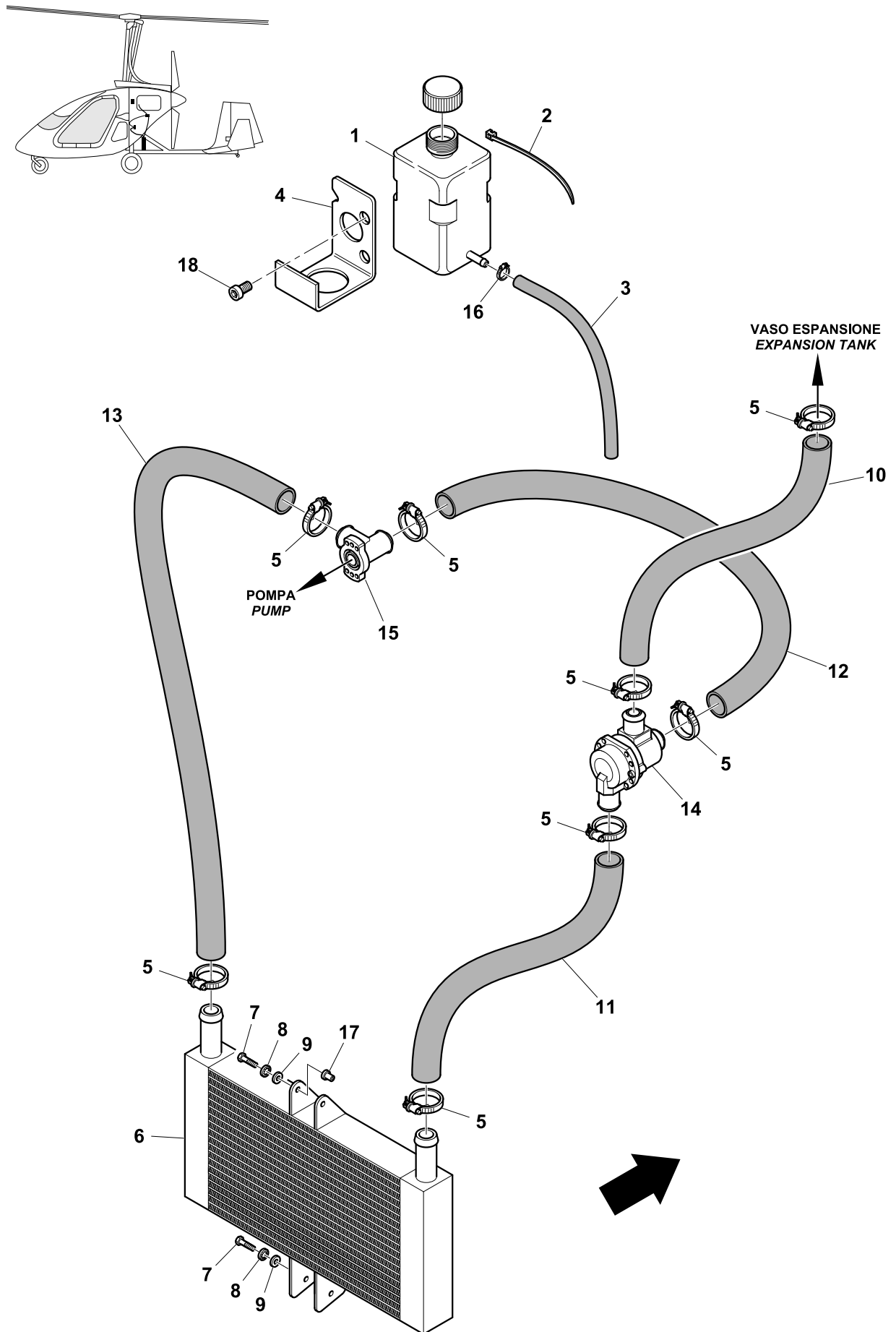


FIG. 19 - FRENO ROTORE

FIG. 19 - ROTOR BRAKE

Pos. Ref.	Codice Part Number	Descrizione	Description	Q.tà Q.ty
1	199-19-24	Leva freno rotore	Rotor brake lever	1
2	1,5x3900	Cavo	Cable	1
3	200-19-24	Guidacavo	Cable retainer	1
4	131-19-24	Guaina Hi-Tech	Cable housing	4m
5	103-19-24	Capoguaina	Cable housing ferrule	2
6	M5x10	Vite TE	Bolt	2
7	AN3-15A	Vite	Bolt	1
8	MS 21042-3	Dado leggero per AN3	Light nut for AN3	1
9	201-19-24	Leva	Lever	1
10	202-19-24	Morsetto fermacavo	Cable retainer	1
11	203-19-24	Distanziale	Spacer	1
12	204-19-24	Spina	Pin	2
13	205-19-24	Disco	Brake aluminium plate	1
14	206-19-24	Perno	Pivot	1
15	207-19-24	Perno	Pivot	1
16	208-19-24	Ceppo freno	Brake shoes	1
17	209-19-24	Molla	Spring	1
18	6x12	Rosetta	Washer	3
19	M6	Dado autobloccante basso	Thin self locking nut	3
20	5x10	Rosetta	Washer	2
21	5	Rosetta frenante	Stopper washer	2
22	407-19-24	Interruttore NC	NC Switch	1
23	408-19-24	Squadretta	Bracket	1
24	5x15	Rosetta	Washer	2

FIG. 19 - FRENO ROTORE
FIG. 19 - ROTOR BRAKE

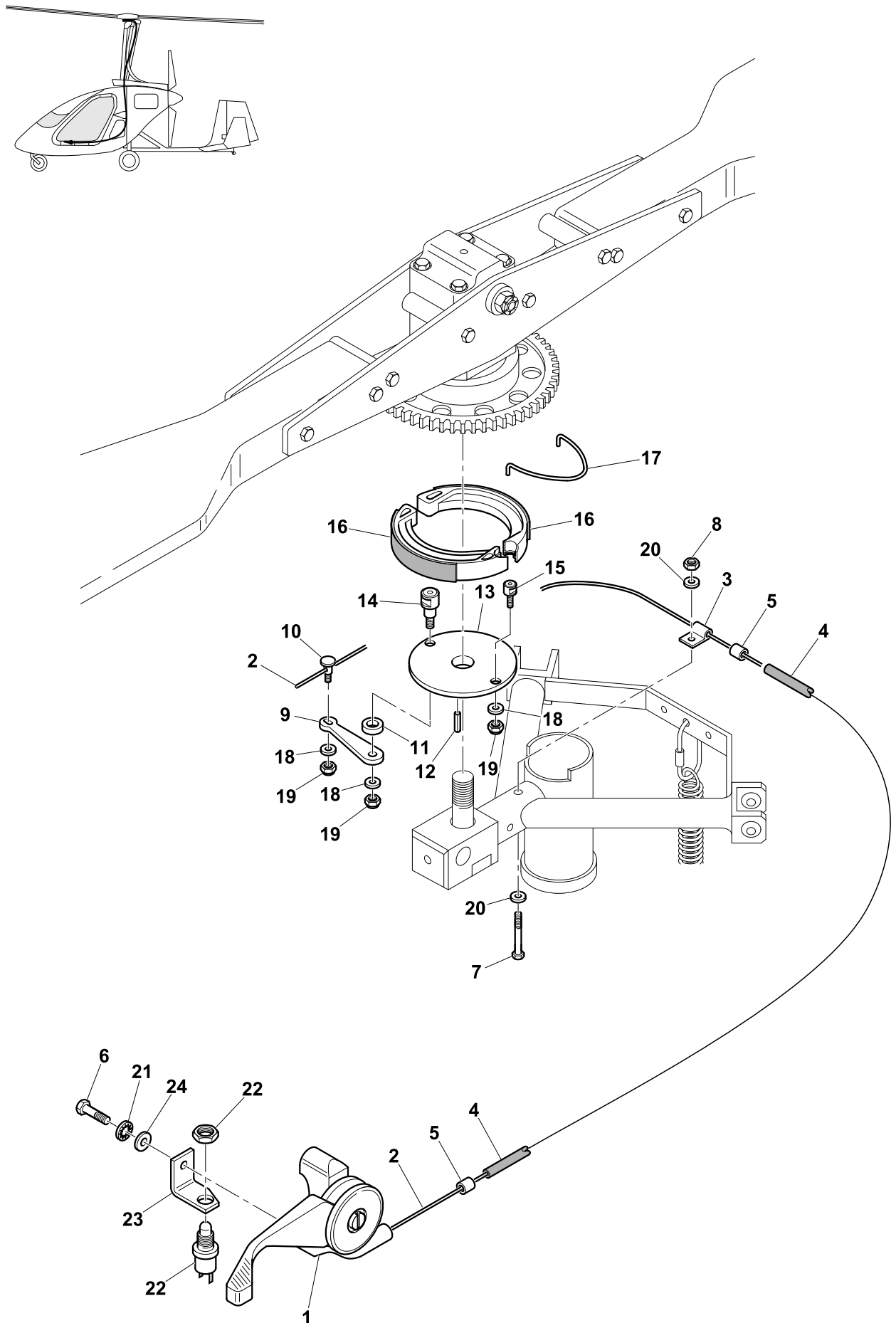


FIG. 20 - PANNELLO STRUMENTI

FIG. 20 - INSTRUMENT PANEL

Pos. Ref.	Codice Part Number	Descrizione	Description	Q.tà Q.ty
1	224-20-24	Interruttore a levetta	Circuit switch	5
2	A 510 - 5	Blocchetto chiave	Ignition switch	1
3	223-20-24	Pulsante starter	Starter button	1
4	W58XB1A4A-5	Breaker pompa carburante	Fuel pump breaker	2
5	472-20-24	Portafusibili	Fuseholder	2
6	651-20-24	Raccordo strumenti 90°	Airflow 90° elbow	3
7	257-20-24	Raccordo Y	Y connection	2
8a	215-20-24	Spia rossa TCU	TCU warning red light	1
8b	216-20-24	Spia arancio TCU	TCU warning orange light	1
8c	217-20-24	Spia batteria	Battery warning light	1
8d	218-20-24	Spia riserva	Fuel warning light	1
8e	421-20-24	Spia freno rotore	Rotor brake warning light	1
8f	219-20-24	Spia verde trim	Trim end-of-run light	1
8g	221-20-24	Lampadina spie	Warning lights bulb	5
8h	222-20-24	Lampadina spia riserva	Fuel warning light bulb	1
9	220-20-24	Pulsante test spia riserva	Test button x fuel warning light	1
10	ROTAX	Flydat	Flydat	1
11	585-20-24	Pannello co-pilota	Co-pilot panel	1
12	584-20-24	Pannello interruttori	Breakers & switches panel	1
13	583-20-24	Pannello strumenti motore	Engine instrument panel	1
14	582-20-24	Pannello strumenti volo	Avionic instrument panel	1
15	625-20-24	Supporto connettori	Connector support	1
16	446-20-24	Indicatore pressione alimentazione	MAP-Manifold pressure	1
17	431-20-24	Contagiri rotore	Rotor tachometer	1
18	ROTAX	Indicatore pressione carburante	Fuel pressure indicator	1
19	652-20-24	Bussola PAI700	PAI700 Compass	1
20	213-20-24	Anemometro	ASI-Air Speed indicator mph	1
21	214-20-24	Altimetro	Altimeter ft	1
22	448-20-24	Variometro	VSI- Vertical speed indicator ft/min	1
23	226-20-24	Indicatore di livello	Fuel gauge	1
24	W23X1A1G-5	Breaker TCU	TCU breaker	1
25	W23X1A1G-2	Breaker Flydat	Flydat breaker	1
26	W23X1A1G-20	Breaker batteria	Battery breaker	1
27	W23X1A1G-20	Breaker generatore	Generator breaker	1
28	W23X1A1G-10	Breaker accessori	Equipment breaker	1
29	6x9	Tubo presa dinamica	Pitot line	1m
30	4x8	Tubo presa statica	Static line	3m
31	581-20-24	Tappo cruscotto	Instrument panel cap	1
32	225-20-24	Bus	Bus	1
33	450-20-24	Relè	Relay	1
34	M3x12	Vite TCEI	Screw	2
35	M3	Dado autobloccante	Self locking nut	2
36	M4x12	Vite TB	Screw	30
37	M4	Inserto filettato	Threaded insert	4
38	595-20-24	Raccordo 90° presa statica	Static line connection	2
39	650-20-24	Raccordo strumenti dritto	Airflow connection	1
40	450-20-24	Relè	Relais	1
41	653-20-24	Squadretta relè	Relais bracket	1
42	M4	Dado autobloccante	Self locking nut	2
43	449-20-24	Presa alimentazione ausiliaria	Auxiliary outlet	1

FIG. 20 - PANNELLO STRUMENTI
FIG. 20 - INSTRUMENT PANEL

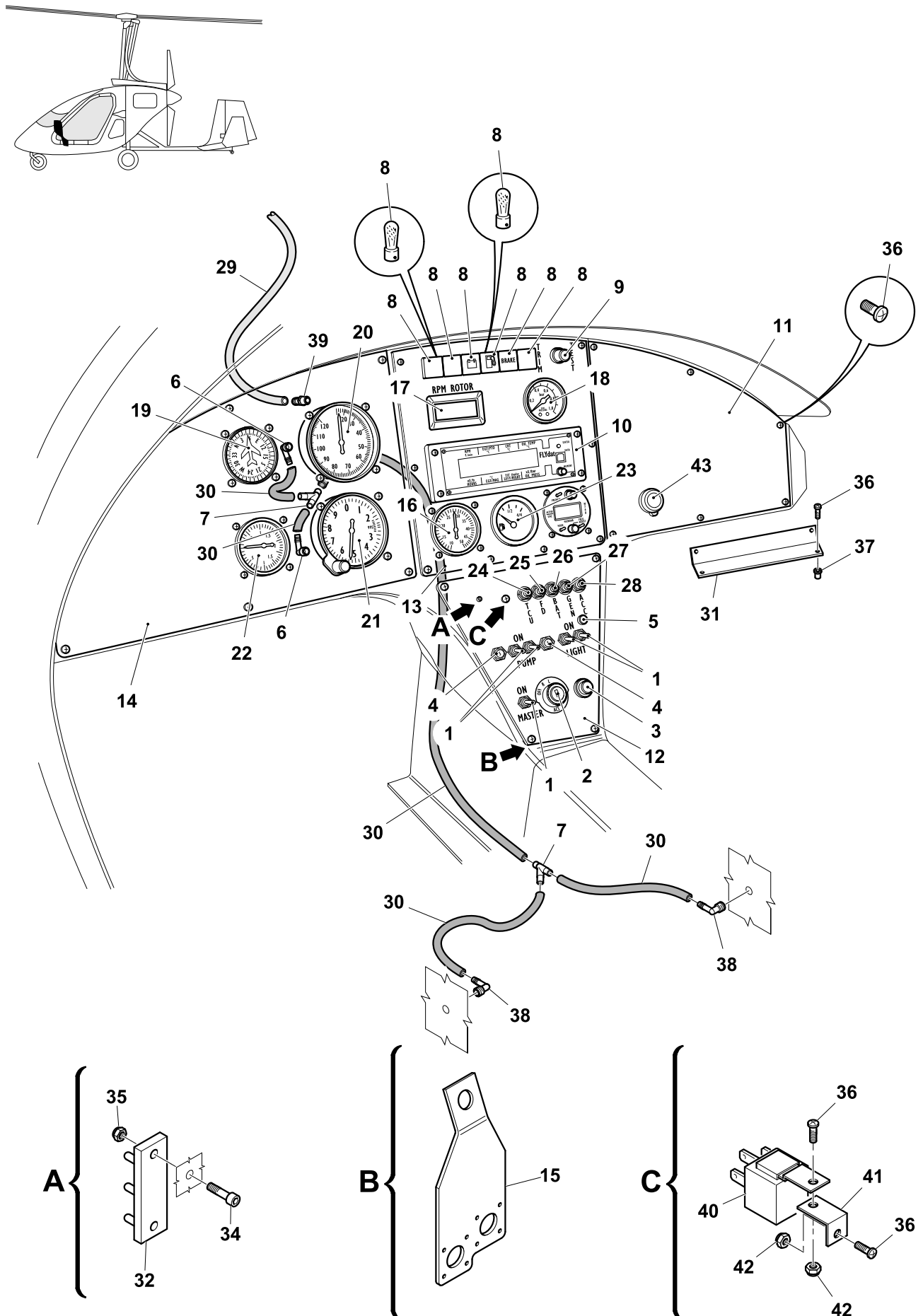


FIG. 21 - COMPONENTI ELETTRICI 1^a parte
FIG. 21 - ELECTRIC COMPONENTS 1st part

Pos. Ref.	Codice Part Number	Descrizione	Description	Q.tà Q.ty
1	ROTAX	Relè	Relay	1
2	M6	Dado autobloccante basso	Thin self locking nut	3
3	MS 25171-1S	Copertura terminale elettrico piccolo	Small electric nipple/cover-thimble	4
4	MS 25171-2S	Copertura terminale elettrico grande	Big electric nipple/cover-thimble	1
5	586-21-24	Cavo	Cable	1
6	587-21-24	Cavo positivo batteria	Battery positive cable	1
7	588-21-24	Cavo negativo batteria	Battery negative cable	1
8	589-21-24	Batteria SP300	Battery	1
9	M5	Dado autobloccante basso	Thin self locking nut	5
10	5x10	Rosetta	Washer	4
11	ROTAX	Regolatore	Regulator	1
12	590-21-24	Cavallotto fissaggio batteria	Battery retainer strap	1
13	5x15	Rosetta frenante	Stopper washer	3
14	ROTAX	Unità di controllo turbo	Turbo control unit (TCU)	1
15	4x8	Rosetta frenante	Stopper washer	4
16	M4	Dado	Nut	4
17	M3x10	Vite TC	Screw	6
18	591-21-24	Lexan faro atterraggio	Landing light lexan	1
19	M3	Inserto filettato	Threaded insert	3
20	593-21-24	Faro d'atterraggio	Landing light	1
21	592-21-24	Ghiera fissaggio faro	Landing light fixing ring nut	1
22	594-21-24	Cablaggio faro	Landing light wiring	1
23	M5x25	Vite TE	Bolt	2
24	234-21-24	Gomma adesiva	Adhesive rubber pad	2

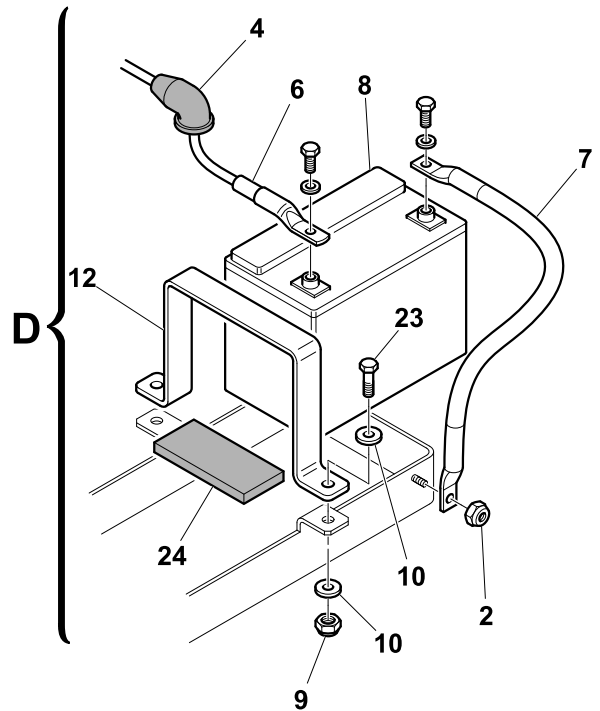
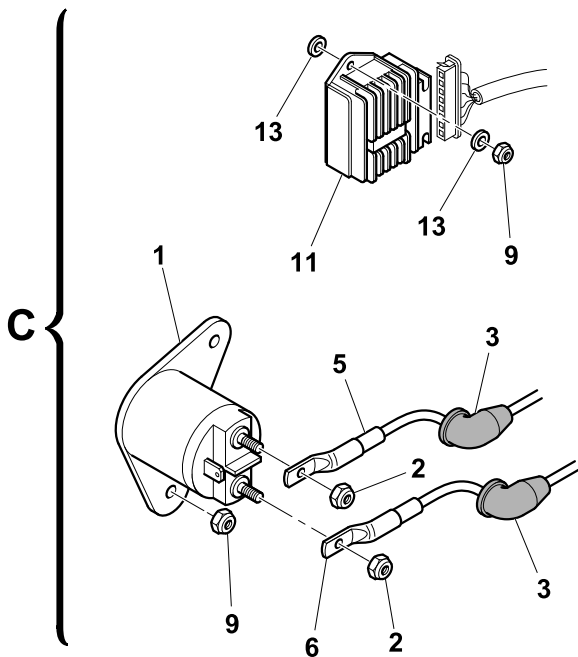
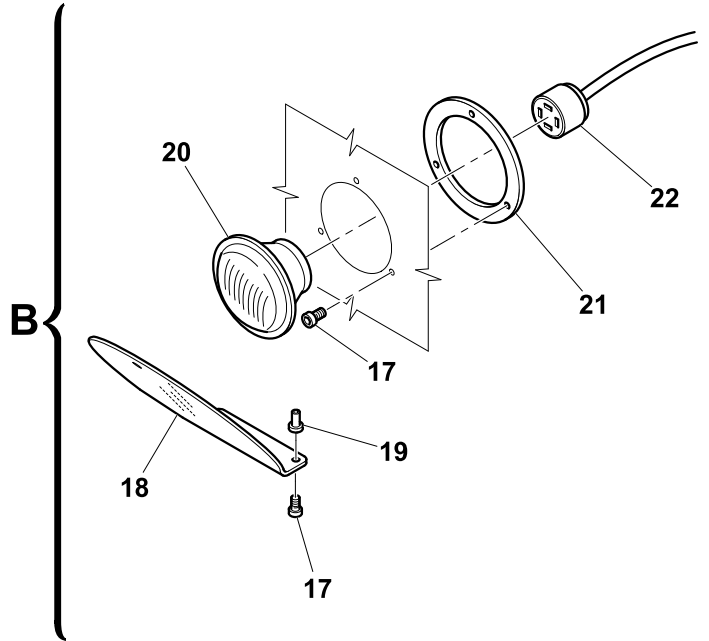
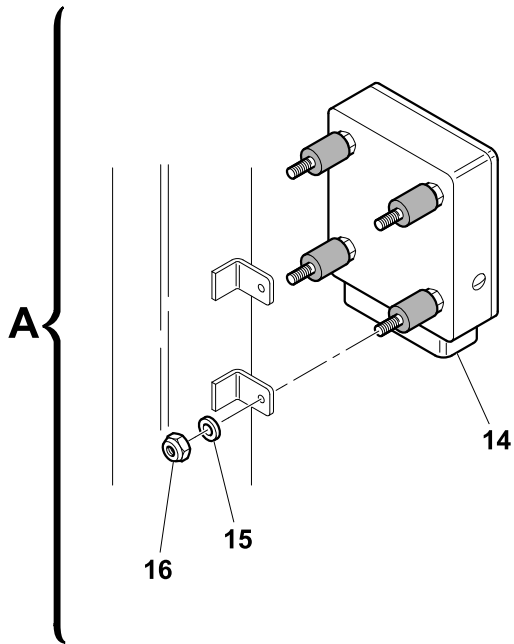
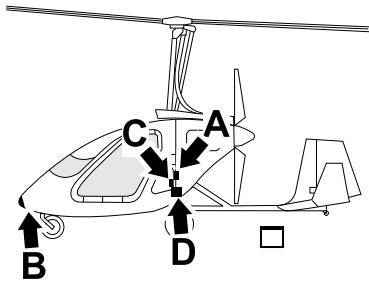
FIG. 21 - COMPONENTI ELETTRICI 1ª parte
FIG. 21 - ELECTRIC COMPONENTS 1st part


FIG. 22 - COMPONENTI ELETTRICI 2^a parte
FIG. 22 - ELECTRIC COMPONENTS 2nd part

Pos. Ref.	Codice Part Number	Descrizione	Description	Q.tà Q.ty
1	235-22-24	Condensatore	Capacitor	1
2	236-22-24	Cavallotto	El. Connection	1
3	M4x12	Vite TB	Screw	1
4	596-22-24	Supporto condensatore	Capacitor mounting clamp	1
5	M4	Dado autobloccante	Self locking nut	2
6	ROTAX	Servo motore	Engine Servo	1
7	ROTAX	Sensore press. ambiente	Ambient Press. Sensor	1
8	5x10	Rosetta	Washer	2
9	M6x25	Vite TE	Bolt	1
10	597-22-24	Fascetta	Clamp	1
11	6x18	Rosetta	Washer	5
12	6x12	Rosetta	Washer	1
13	M6	Dado autobloccante basso	Thin self locking nut	4
14	M6x20	Vite TE	Bolt	1
15	238-22-24	Sensore RPM rotore	Rotor RPM sensor	1
16	598-22-24	Distanziale	Spacer	1
17	655-22-24	Cablaggio principale	Main harness	1
18	241-22-24	Fascetta	Clamp	2
19	M6x60	Vite TE	Bolt	1
20	M5	Dado autobloccante basso	Thin self locking nut	1
21	M4x12	Vite TS	Screw	1

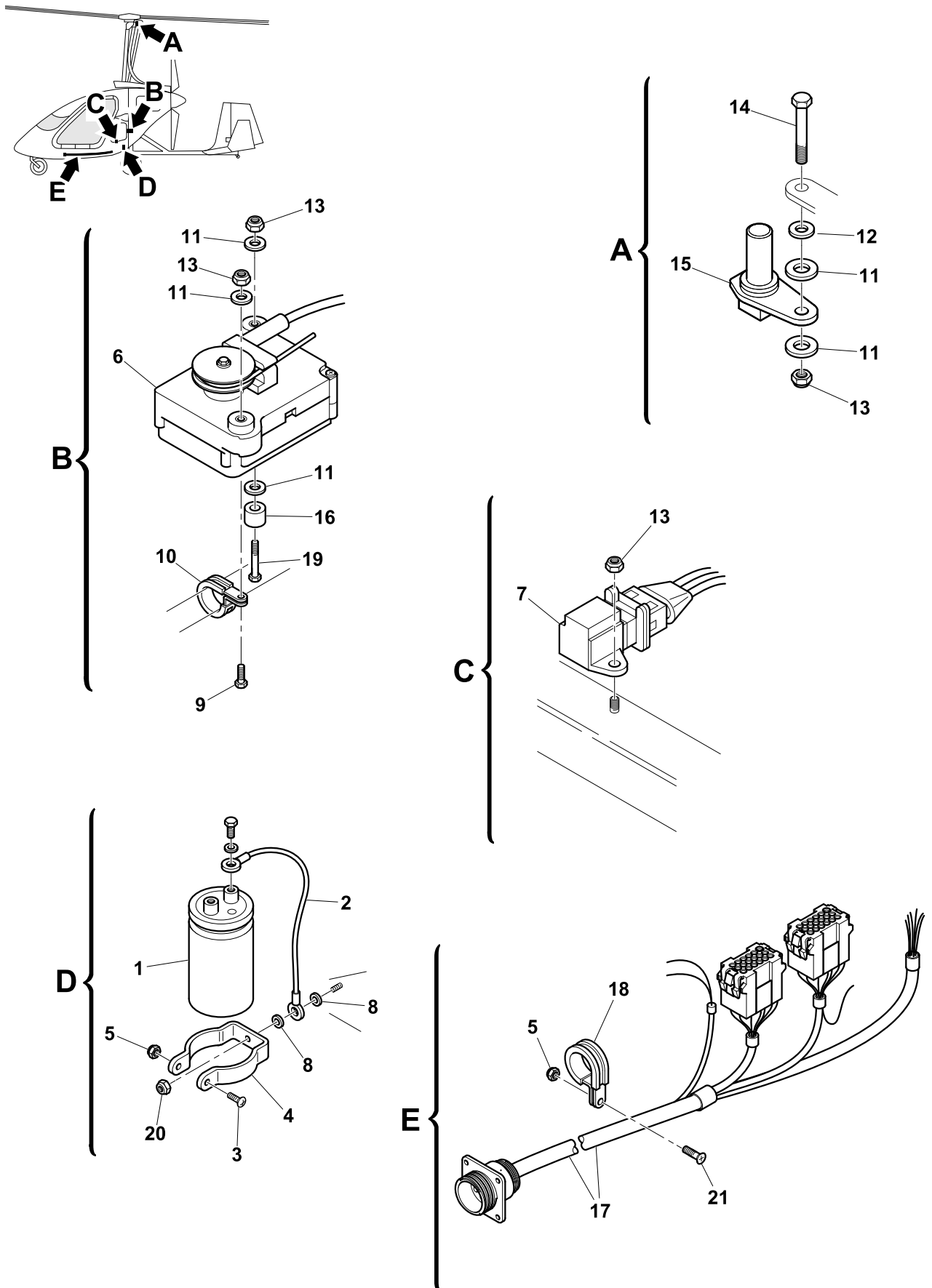
FIG. 22 - COMPONENTI ELETTRICI 2^a parte
FIG. 22 - ELECTRIC COMPONENTS 2nd part


FIG. 23 - ACCESSORI MOTORE**FIG. 23 - ENGINE EQUIPMENT**

Pos. Ref.	Codice Part Number	Descrizione	Description	Q.tà Q.ty
1	ROTAX	Sonda EGT	EGT sender	4
2	M10x100	Vite TCEI	Screw	4
3	242-23-24	Distanziale	Spacer	8
4	243-23-24	Antivibrante	Vibration damper	8
5	M10	Dado autobloccante	Self locking nut	4
6	244-23-24	Cavo massa motore	Engine ground cable	1
7	257-23-24	Raccordo Y	Y connection	3
8	M6	Dado autobloccante basso	Thin self locking nut	1
9	4x8	Tubo drenaggio	Drain hose	2 mt

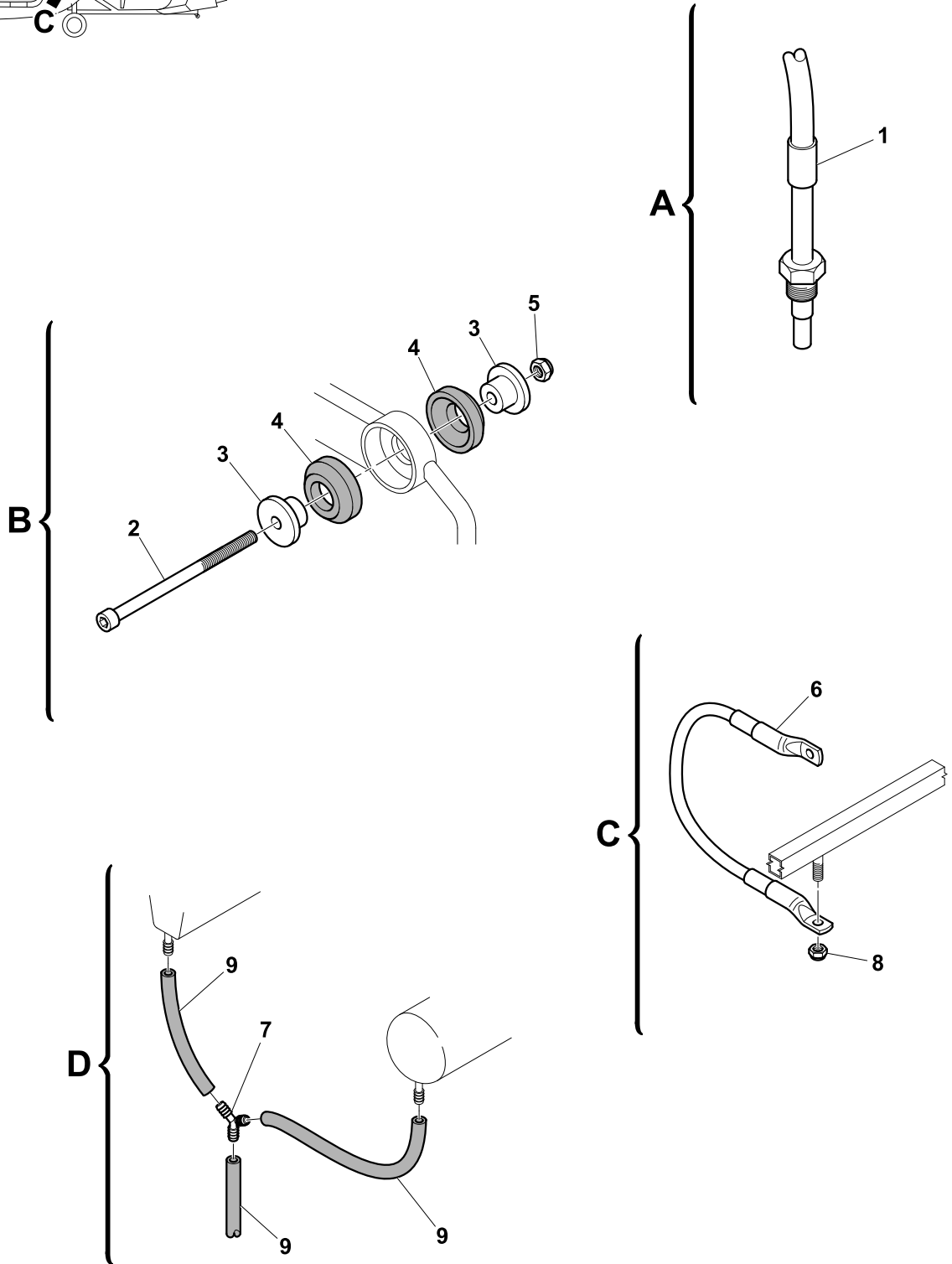
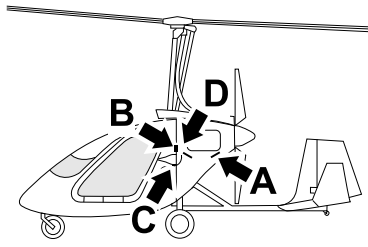
FIG. 23 - ACCESSORI MOTORE
FIG. 23 - ENGINE EQUIPMENT


FIG. 24 - ROTORE**FIG. 24 - ROTOR**

Pos. Ref.	Codice Part Number	Descrizione	Description	Q.tà Q.ty
1	285-24-24	Staffa rotore lunga 28 ft.	28 ft hub-bar	1
2	246-24-24	Pala	Blade	2
3	247-24-24	Bussola filettata	Threaded bushing	1
4	283-24-24	Ghiera	Lock nut	1
5	248-24-24	Bussola	Bushing	1
6	AN 8-41A	Vite TE	Bolt	4
7	AN 310-8	Dado	Nut	4
8	AN 416-1	Spilla di sicurezza	Safety pin	4
9	12x24	Rosetta	Washer	8

FIG. 24 - ROTORE
FIG. 24 - ROTOR

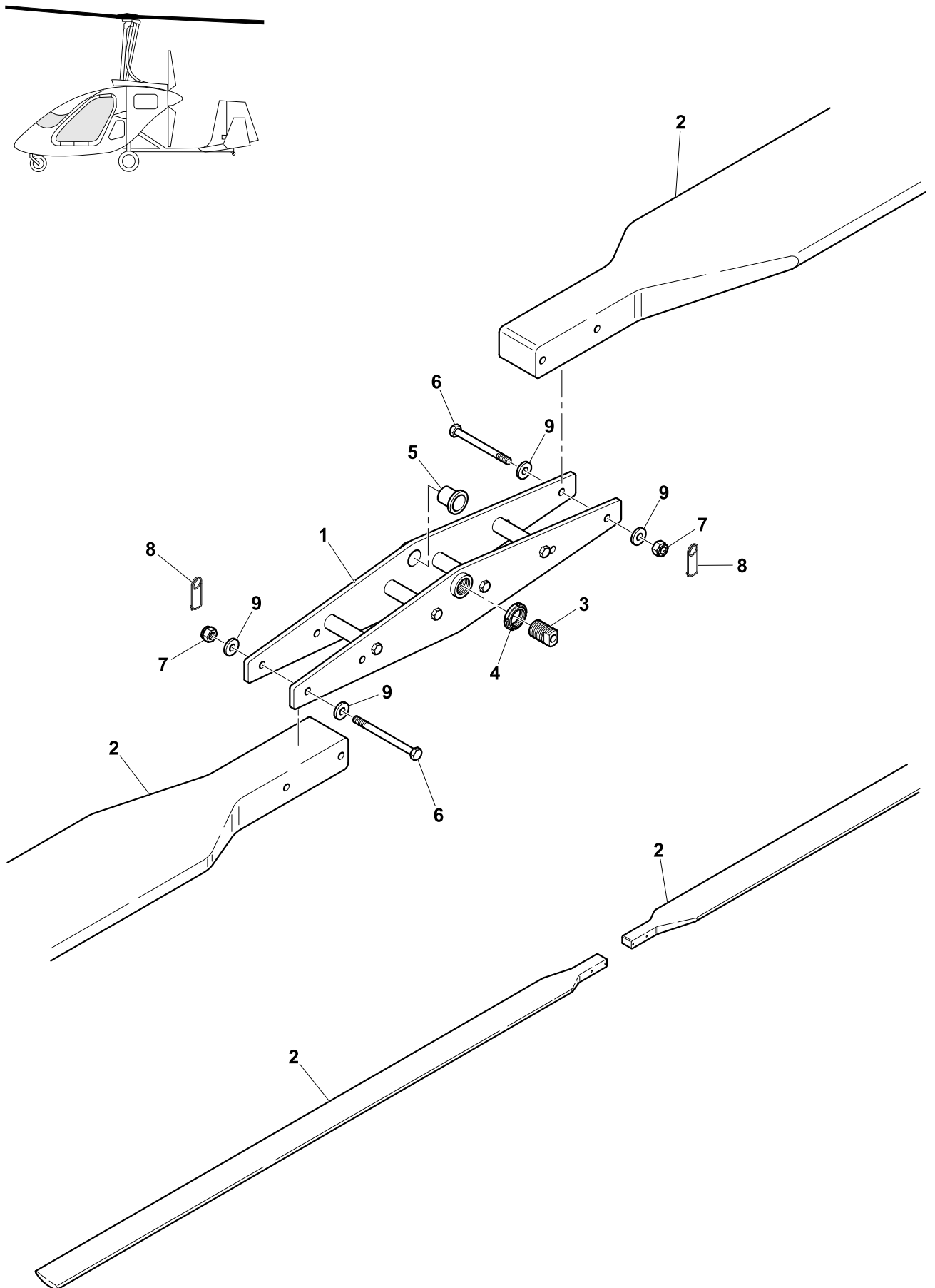


FIG. 25 - CAPOTTATURE

FIG. 25 - FIARINGS

Pos. Ref.	Codice Part Number	Descrizione	Description	Q.tà Q.ty
1	599-25-24	Capottatura destra	Right fairing	1
2	600-25-24	Capottatura sinistra	Left fairing	1
3	601-25-24	Codino	Tail cover	1
4	602-25-24	Portello destro	Right hatch	1
5	603-25-24	Portello sinistro	Left hatch	1
6	360-25-24	Cerniera portelli	Hatches hinge	2
7	3,2x6	Rivetto	Rivet	28
8	604-25-24	Chiusura 1/4 di giro	1/4 turn closing system	9
9	605-25-24	Ricettacolo	Receptacle	9
10	606-25-24	Passacavo Ø 22	Cable guide Ø 22	1
11	607-25-24	Passacavo Ø 12	Cable guide Ø 12	1
12	M4x12	Vite TB	Screw	37
13	556-25-24	Rosetta nylon	Nylon washer	35
14	608-25-24	Paratia verticale	Vertical bulkhead	1
15	609-25-24	Paratia destra	Right bulkhead	1
16	610-25-24	Paratia sinistra	Left bulkhead	1
17	611-25-24	Guarnizione	Sealing strip	3
18	612-25-24	Squadretta	Bracket	2
19	M4	Dado autobloccante	Self locking nut	2
20	M6x10	Vite TCEI	Screw	5
21	6	Rosetta frenante	Stopper washer	5
22	6x12	Rosetta	Washer	5
23	2,4x6	Rivetto	Rivet	4
24	2,4x6-S	Rivetto testa svasata	Flat head rivet	18

FIG. 25 - CAPOTTATURE
FIG. 25 - FIARINGS

